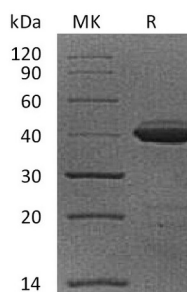


Summary

Name	B2M/ β 2-Microglobulin/Beta-2-microglobulin
Purity	Greater than 95% as determined by reducing SDS-PAGE
Endotoxin level	<1 EU/ μ g as determined by LAL test.
Construction	Recombinant Cynomolgus Monkey Beta-2-microglobulin is produced by our Mammalian expression system and the target gene encoding Ile21-Met119 is expressed with a human IgG1 Fc tag at the C-terminus.
Accession #	Q8SPW0
Host	Human Cells
Species	Cynomolgus
Predicted Molecular Mass	38.8 KDa
Formulation	Lyophilized from a 0.2 μ m filtered solution of PBS, pH 7.4.
Shipping	The product is shipped at ambient temperature. Upon receipt, store it immediately at the temperature listed below.
Stability&Storage	Store at \leq -70°C, stable for 6 months after receipt. Store at \leq -70°C, stable for 3 months under sterile conditions after opening. Please minimize freeze-thaw cycles.
Reconstitution	Always centrifuge tubes before opening. Do not mix by vortex or pipetting. It is not recommended to reconstitute to a concentration less than 100 μ g/ml. Dissolve the lyophilized protein in distilled water. Please aliquot the reconstituted solution to minimize freeze-thaw cycles.

SDS-PAGE image



Background

Product Name: Recombinant Cynomolgus B2M (C-Fc)
Catalog #: PHV1991



Alternative Names

Beta-2-Microglobulin; B2M

Background

β -2-Microglobulin (B2M) is a secreted protein with 1 Ig-like C1-type (immunoglobulin-like) domain which belongs to the beta-2-microglobulin family. B2M component of major histocompatibility complex (MHC) class I molecules, involved in the presentation of peptide antigens to the immune system. Polymers of beta 2-microglobulin can be found in tissues from patients on long-term hemodialysis. B2M is a protein found on the surface of many cells and plentiful on the surface of white blood cells. Serum B2M concentration is increased in renal diseases, various malignant diseases and some inflammatory and autoimmune disorders. B2M may adopt the fibrillar configuration of amyloid in certain pathologic states. The capacity to assemble into amyloid fibrils is concentration dependent. B2M has been shown as a marker for monitoring inflammatory disease activity and it appears likely to have a destructive role in amyloidosis-related arthritis. B2M might be involved in the OA (osteoarthritis) pathogenesis. Defects in B2M are the cause of hypercatabolic hypoproteinemia. Affected individuals show marked reduction in serum concentrations of immunoglobulin and albumin, probably due to rapid degradation. B2M could be a potential therapeutic target in ovarian cancer.

Note

For Research Use Only , Not for Diagnostic Use.