

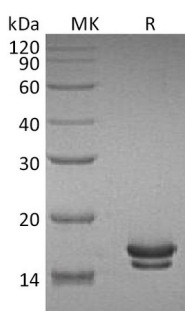
Product Name: Recombinant Rat IL-2 (C-6His)
Catalog #: PHR0994



Summary

Name	IL-2/Interleukin-2/T cell growth factor/TCGF
Purity	Greater than 95% as determined by reducing SDS-PAGE
Endotoxin level	<1 EU/μg as determined by LAL test.
Construction	Recombinant Rat Interleukin-2 is produced by our Mammalian expression system and the target gene encoding Ala21-Gln155 is expressed with a 6His tag at the C-terminus.
Accession #	P17108
Host	Human Cells
Species	Rat
Predicted Molecular Mass	16.3 KDa
Formulation	Supplied as a 0.2 μm filtered solution of 5mM NaH ₂ PO ₄ , 5mM Citric acid, 150mM NaCl, pH 4.0.
Shipping	The product is shipped on dry ice/polar packs. Upon receipt, store it immediately at the temperature listed below.
Stability&Storage	Store at ≤-70°C, stable for 6 months after receipt. Store at ≤-70°C, stable for 3 months under sterile conditions after opening. Please minimize freeze-thaw cycles.
Reconstitution	0.00.0

SDS-PAGE image



Background

Alternative Names Interleukin-2; IL-2; T-cell growth factor; TCGF; Aldesleukin; IL2

Background Interleukin-2(IL-2)is a O-glycosylated four α-helix bundle cytokine that has potent stimulatory activity for antigenactivated T cells. It is expressed by CD4+ and CD8+

Product Name: Recombinant Rat IL-2 (C-6His)
Catalog #: PHR0994

T cells, $\gamma\delta$ T cells, B cells, dendritic cells, and eosinophils. Mature rat IL-2 shares 66% and 73% amino acid sequence identity with human and mouse IL-2, respectively. The receptor for IL-2 consists of three subunits that are present on the cell surface in varying preformed complexes. IL-2 is a powerful immunoregulatory lymphokine produced by T-cells in response to antigenic or mitogenic stimulation. IL-2/IL-2R signaling is required for T-cell proliferation and other fundamental functions that are essential for the immune response. IL-2 stimulates growth and differentiation of B-cells, NK cells, lymphokine-activated killer cells, monocytes, macrophages and oligodendrocytes.

Note

For Research Use Only , Not for Diagnostic Use.