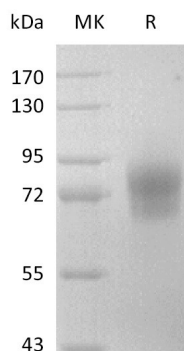


## Summary

<b>Name</b>	CD123/IL-3RA/IL-3 Receptor Subunit Alpha
<b>Purity</b>	Greater than 95% as determined by reducing SDS-PAGE
<b>Endotoxin level</b>	<1 EU/ $\mu$ g as determined by LAL test.
<b>Construction</b>	Recombinant Mouse Interleukin-3 Receptor Subunit Alpha is produced by our Mammalian expression system and the target gene encoding Ser17-Lys331 is expressed with a human IgG1 Fc tag at the C-terminus.
<b>Accession #</b>	P26952
<b>Host</b>	Human Cells
<b>Species</b>	Mouse
<b>Predicted Molecular Mass</b>	61.6 KDa
<b>Formulation</b>	Lyophilized from a 0.2 $\mu$ m filtered solution of PBS, pH 7.4.
<b>Shipping</b>	The product is shipped at ambient temperature. Upon receipt, store it immediately at the temperature listed below.
<b>Stability&amp;Storage</b>	Store at $\leq$ -70°C, stable for 6 months after receipt. Store at $\leq$ -70°C, stable for 3 months under sterile conditions after opening. Please minimize freeze-thaw cycles.
<b>Reconstitution</b>	Always centrifuge tubes before opening. Do not mix by vortex or pipetting. It is not recommended to reconstitute to a concentration less than 100 $\mu$ g/ml. Dissolve the lyophilized protein in distilled water. Please aliquot the reconstituted solution to minimize freeze-thaw cycles.

## SDS-PAGE image



**Product Name: Recombinant Mouse CD123 (C-Fc)**  
**Catalog #: PHM2369**



---

## Background

<b>Alternative Names</b>	Interleukin-3 receptor subunit alpha; IL-3 receptor subunit alpha; IL-3R subunit alpha; IL-3R-alpha; IL-3RA
<b>Background</b>	CD123, also known as Interleukin-3 receptor subunit alpha, belongs to the type I cytokine receptor family. In mouse, there are two classes of high-affinity IL3 receptors. One contains an IL3-specific beta subunit and the other contains the beta subunit also shared by high-affinity IL5 and GM-CSF receptors. CD123 stimulates the proliferation and differentiation of hemopoietic cells including the pluripotent hematopoietic stem cells as well as various lineage-committed cells. CD123 is a heterodimer consisting of an alpha and a beta subunit. The alpha subunit alone binds IL-3 with low affinity. The beta subunit does not bind IL-3 by itself but is required for the high-affinity binding of IL-3 to the heterodimeric receptor complex.

## Note

For Research Use Only , Not for Diagnostic Use.