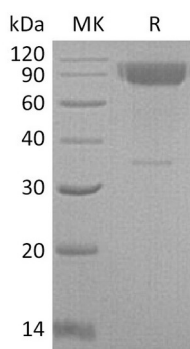


Summary

Name	IL-2 R gamma/IL-2RG/CD132/Common gamma Chain/Interleukin-2 Receptor Subunit Gamma/IL-2 Ry/CIDX
Purity	Greater than 95% as determined by reducing SDS-PAGE
Endotoxin level	<1 EU/ μ g as determined by LAL test.
Construction	Recombinant Mouse Interleukin-2 Receptor Subunit Gamma is produced by our Mammalian expression system and the target gene encoding Ser25-Ala263 is expressed with a human IgG1 Fc tag at the C-terminus.
Accession #	Q3UPA9
Host	Human Cells
Species	Mouse
Predicted Molecular Mass	55.1 KDa
Formulation	Lyophilized from a 0.2 μ m filtered solution of PBS, pH 7.4.
Shipping	The product is shipped at ambient temperature. Upon receipt, store it immediately at the temperature listed below.
Stability&Storage	Lyophilized protein should be stored at $\leq -20^{\circ}\text{C}$, stable for one year after receipt. Reconstituted protein solution can be stored at 2-8 $^{\circ}\text{C}$ for 2-7 days. Aliquots of reconstituted samples are stable at $\leq -20^{\circ}\text{C}$ for 3 months.
Reconstitution	Always centrifuge tubes before opening. Do not mix by vortex or pipetting. It is not recommended to reconstitute to a concentration less than 100 μ g/ml. Dissolve the lyophilized protein in distilled water. Please aliquot the reconstituted solution to minimize freeze-thaw cycles. Always centrifuge tubes before opening. Do not mix by vortex or pipetting. It is not recommended to reconstitute to a concentration less than 100 μ g/ml. Dissolve the lyophilized protein in distilled water. Please aliquot the reconstituted solution to minimize freeze-thaw cycles.

SDS-PAGE image



Background

Product Name: Recombinant Mouse IL-2RG (C-Fc)
Catalog #: PHM0993



Alternative Names

Interleukin 2 receptor, gamma chain, isoform CRA_b; Il2rg

Background

The Interleukin-2 receptor gamma chain (IL-2 R γ , CD132) of the high affinity functional mouse IL-2 receptor complex is a member the hematopoietin receptor family. It is expressed on most lymphocyte (white blood cell) populations, and its gene is found on the X-chromosome of mammals. Common IL2 receptor- γ Chain is required for IL-2 receptor signaling. Besides IL-2, the Common IL2 receptor- γ chain has been shown to be a component of the functional receptor complexes for IL-4, IL-7, IL-9 and IL-15. It is a component of multiple cytokine receptors that are essential for lymphocyte development and function. Common IL2 receptor- γ Chain is also designated the common gamma chain.

Note

For Research Use Only , Not for Diagnostic Use.