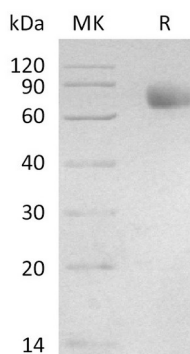


Summary

Name	CD33/Siglec-3/Siglec3
Purity	Greater than 95% as determined by reducing SDS-PAGE
Endotoxin level	<1 EU/μg as determined by LAL test.
Construction	Recombinant Human Myeloid cell surface antigen CD33 is produced by our Mammalian expression system and the target gene encoding Asp18-His259 is expressed with a mouse IgG1 Fc tag at the C-terminus.
Accession #	AAH28152.1
Host	Human cells
Species	Human
Predicted Molecular Mass	53.5 kDa
Formulation	Lyophilized from a 0.2 μm filtered solution of PBS, pH7.4.
Shipping	The product is shipped at ambient temperature. Upon receipt, store it immediately at the temperature listed below.
Stability&Storage	Store at ≤-70°C, stable for 6 months after receipt. Store at ≤-70°C, stable for 3 months under sterile conditions after opening. Please minimize freeze-thaw cycles.
Reconstitution	Always centrifuge tubes before opening. Do not mix by vortex or pipetting. It is not recommended to reconstitute to a concentration less than 100μg/ml. Dissolve the lyophilized protein in distilled water. Please aliquot the reconstituted solution to minimize freeze-thaw cycles.

SDS-PAGE image



Background

Product Name: Recombinant Human Siglec-3 (C-mFc)
Catalog #: PHH2444



Alternative Names

Myeloid Cell Surface Antigen CD33; Sialic Acid-Binding Ig-Like Lectin 3; Siglec-3; gp67; CD33; SIGLEC3

Background

CD33 is a type I Lectin belonging to the Ig superfamily. CD33 contains an N terminal Ig like V type domain, which mediates sialic acid binding, followed by one Ig like C2 type domain, a transmembrane region and a cytoplasmic tail containing two conserved immunoreceptor tyrosine based inhibition motifs (ITIMs). Eleven human Siglecs have been characterized. Siglecs 5 to 11 share a high degree of sequence similarity with CD33/Siglec3 both in their extracellular and intracellular regions. They are collectively referred to as CD33 related Siglecs. CD33 related Siglecs have differential expression pattern within the hematopoietic system. They are involved in the regulation of cellular activation within the immune system. Siglec 3 expression is restricted to cells of myelomonocytic lineage. Siglec3 recruits SHP1 and SHP2 to its ITIMs upon phosphorylation.

Note

For Research Use Only , Not for Diagnostic Use.