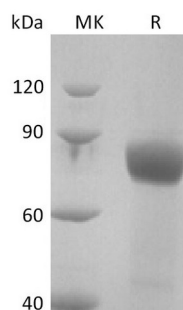


## Summary

<b>Name</b>	IL-18RAcP/IL-18RAP/IL-18 Receptor Accessory Protein/IL-1R7
<b>Purity</b>	Greater than 95% as determined by reducing SDS-PAGE
<b>Endotoxin level</b>	<1 EU/μg as determined by LAL test.
<b>Construction</b>	Recombinant Human Interleukin-18 receptor accessory protein is produced by our Mammalian expression system and the target gene encoding Phe20-Arg356 is expressed with a human IgG1 Fc, 6His tag at the C-terminus.
<b>Accession #</b>	O95256
<b>Host</b>	Human Cells
<b>Species</b>	Human
<b>Predicted Molecular Mass</b>	66.4 KDa
<b>Formulation</b>	Lyophilized from a 0.2 μm filtered solution of PBS, pH 7.4.
<b>Shipping</b>	The product is shipped at ambient temperature. Upon receipt, store it immediately at the temperature listed below.
<b>Stability&amp;Storage</b>	Store at ≤-70°C, stable for 6 months after receipt. Store at ≤-70°C, stable for 3 months under sterile conditions after opening. Please minimize freeze-thaw cycles.
<b>Reconstitution</b>	Always centrifuge tubes before opening. Do not mix by vortex or pipetting. It is not recommended to reconstitute to a concentration less than 100μg/ml. Dissolve the lyophilized protein in distilled water. Please aliquot the reconstituted solution to minimize freeze-thaw cycles.

## SDS-PAGE image



## Background

**Product Name: Recombinant Human IL-18RAcP (C-Fc-6His)**  
**Catalog #: PHH2365**

---

**Alternative Names**

Interleukin-18 receptor accessory protein; IL18RAP; Accessory protein-like; CD218 antigen-like family member B; CDw218b; IL-1R accessory protein-like; Interleukin-1 receptor 7; Interleukin-18 receptor accessory protein-like; Interleukin-18 receptor beta; CD218b; IL1R7

**Background**

IL-18RAP is a single-pass type I membrane protein and contains two Ig-like C2-type domains and one TIR domain, IL18RAP can be induced by IFN-alpha and IL12 in nature killer cells and T-cells. The coexpression of IL18R1 and IL18RAP is required for the activation of NF-kappa B and JNK in response to IL-18. Defects in IL18RAP are associated with Coeliac disease.

**Note**

For Research Use Only , Not for Diagnostic Use.