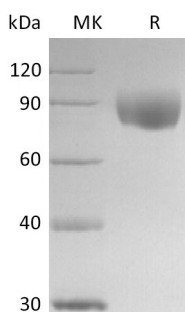


Summary

Name	IL-17RD/SEF
Purity	Greater than 95% as determined by reducing SDS-PAGE
Endotoxin level	<1 EU/μg as determined by LAL test.
Construction	Recombinant Human Interleukin-17 Receptor D is produced by our Mammalian expression system and the target gene encoding Cys17-Arg299 is expressed with a human IgG1 Fc tag at the C-terminus.
Accession #	Q8NFM7
Host	Human Cells
Species	Human
Predicted Molecular Mass	58.9 KDa
Formulation	Lyophilized from a 0.2 μm filtered solution of PBS, pH 7.4.
Shipping	The product is shipped at ambient temperature. Upon receipt, store it immediately at the temperature listed below.
Stability&Storage	Store at ≤-70°C, stable for 6 months after receipt. Store at ≤-70°C, stable for 3 months under sterile conditions after opening. Please minimize freeze-thaw cycles.
Reconstitution	Always centrifuge tubes before opening. Do not mix by vortex or pipetting. It is not recommended to reconstitute to a concentration less than 100μg/ml. Dissolve the lyophilized protein in distilled water. Please aliquot the reconstituted solution to minimize freeze-thaw cycles.

SDS-PAGE image



Background

Product Name: Recombinant Human IL-17RD (C-Fc)
Catalog #: PHH2347



Alternative Names

IL-17 RD; IL17RD; IL-17RD; IL-17RDIL-17 receptor D; IL17Rhom; IL17RLM; interleukin 17 receptor D; SEF

Background

Interleukin-17 receptor D (IL-17 RD), also known as SEF (similar expression to FGFs), is a type I transmembrane protein that is found in both the cytoplasm and plasma membrane. IL-17RD functions as a feedback inhibitor of fibroblast growth factor mediated Ras-MAPK signaling and ERK activation. It may inhibit FGF-induced FGFR1 tyrosine phosphorylation, regulate the nuclear ERK signaling pathway by spatially blocking nuclear translocation of activated ERK. By similarity, and mediate JNK activation and may be involved in apoptosis. IL-17RD interacts with the IL-17R downstream molecule TRAF6. It has been proposed that the IL-17RD intracellular domain interacts with IL-17R and TRAF6 to deliver the downstream signal.

Note

For Research Use Only , Not for Diagnostic Use.