

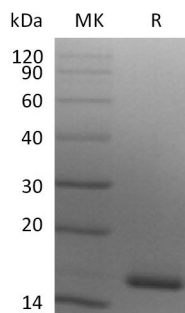
**Product Name: Recombinant Human Ig lambda constant 2 (C-6His)**  
**Catalog #: PHH2323**

---

## Summary

<b>Name</b>	Ig lambda constant 2
<b>Purity</b>	Greater than 95% as determined by reducing SDS-PAGE
<b>Endotoxin level</b>	<1 EU/μg as determined by LAL test.
<b>Construction</b>	Recombinant Human Immunoglobulin Lambda Constant 2 is produced by our Mammalian expression system and the target gene encoding Gly1-Ser106 is expressed with a 6His tag at the C-terminus.
<b>Accession #</b>	P0DOY2
<b>Host</b>	Human Cells
<b>Species</b>	Human
<b>Predicted Molecular Mass</b>	12.1 KDa
<b>Formulation</b>	Lyophilized from a 0.2 μm filtered solution of PBS, pH 7.4.
<b>Shipping</b>	The product is shipped at ambient temperature. Upon receipt, store it immediately at the temperature listed below.
<b>Stability&amp;Storage</b>	Store at ≤-70°C, stable for 6 months after receipt. Store at ≤-70°C, stable for 3 months under sterile conditions after opening. Please minimize freeze-thaw cycles.
<b>Reconstitution</b>	Always centrifuge tubes before opening. Do not mix by vortex or pipetting. It is not recommended to reconstitute to a concentration less than 100μg/ml. Dissolve the lyophilized protein in distilled water. Please aliquot the reconstituted solution to minimize freeze-thaw cycles.

## SDS-PAGE image



## Background

---

**Product Name: Recombinant Human Ig lambda constant 2 (C-6H1S)**  
**Catalog #: PHH2323**

---

**Alternative Names**

Ig Lambda C Domain; IGLC; IGLC2; immunoglobulin lambda constant 2 (Kern-Oz-marker); MGC20392; MGC45681

**Background**

Immunoglobulin lambda constant region is constant region of immunoglobulin light chains. Immunoglobulins, also known as antibodies, are membrane-bound or secreted glycoproteins produced by B lymphocytes. In the recognition phase of humoral immunity, the membrane-bound immunoglobulins serve as receptors which, upon binding of a specific antigen, trigger the clonal expansion and differentiation of B lymphocytes into immunoglobulins-secreting plasma cells. IGLC2 is 105 amino acids (aa) in length. It contains one Ig-like domain (aa 7-100) and generates a disulfide bond with an IgH chain via Cys104.

**Note**

For Research Use Only , Not for Diagnostic Use.