

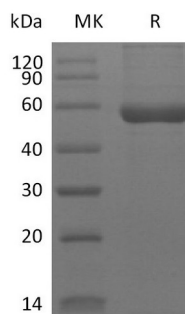
**Product Name: Recombinant Human HLA-A\*0201 WT-1 complex Protein (C-10His)**  
**Catalog #: PHH2317**

---

## Summary

<b>Name</b>	HLA-A*0201 WT-1 complex Protein
<b>Purity</b>	Greater than 95% as determined by reducing SDS-PAGE
<b>Endotoxin level</b>	<1 EU/μg as determined by LAL test.
<b>Construction</b>	Recombinant Human HLA-A*0201 WT-1 complex Protein is produced by our Mammalian expression system and the target gene encoding (RMFPNAPYL)&Ile21-Met119&Gly25-Ile308 (Ala269Val) is expressed with a 10His tag at the C-terminus.
<b>Accession #</b>	P61769&P01892
<b>Host</b>	Human Cells
<b>Species</b>	Human
<b>Predicted Molecular Mass</b>	49.1 KDa
<b>Formulation</b>	Lyophilized from a 0.2 μm filtered solution of 20mM PB, 150mM NaCl, 5% Trehalose, 5% Mannitol, 0.01% Tween 80, pH 7.4.
<b>Shipping</b>	The product is shipped at ambient temperature. Upon receipt, store it immediately at the temperature listed below.
<b>Stability&amp;Storage</b>	Store at ≤-70°C, stable for 6 months after receipt. Store at ≤-70°C, stable for 3 months under sterile conditions after opening. Please minimize freeze-thaw cycles.
<b>Reconstitution</b>	Always centrifuge tubes before opening. Do not mix by vortex or pipetting. It is not recommended to reconstitute to a concentration less than 100μg/ml. Dissolve the lyophilized protein in distilled water. Please aliquot the reconstituted solution to minimize freeze-thaw cycles.

## SDS-PAGE image





**Product Name: Recombinant Human HLA-A\*0201 WT-1 complex Protein (C10His)**  
**Catalog #: PHH2317**

---

## Background

**Alternative Names** NA

**Background** The WT1 protein plays an important role in cellular development and cell survival. Regulates the expression of numerous target genes, including EPO. Plays an essential role for development of the urogenital system. It has a tumor suppressor as well as an oncogenic role in tumor formation.

## Note

For Research Use Only , Not for Diagnostic Use.