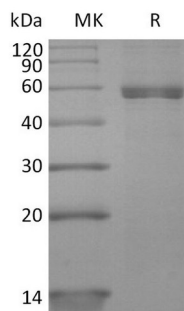


Product Name: Recombinant Human HLA-A*0201 NY-ESO-1 complex Protein (C-10His)
Catalog #: PHH2307

Summary

Name	HLA-A*0201 NY-ESO-1 complex Protein
Purity	Greater than 95% as determined by reducing SDS-PAGE
Endotoxin level	<1 EU/μg as determined by LAL test.
Construction	Recombinant Human HLA-A*0201 NY-ESO-1 complex Protein is produced by our Mammalian expression system and the target gene encoding (SLLMWITQC)&Ile21-Met119&Gly25-Ile308 (Ala269Val) is expressed with a 10His tag at the C-terminus.
Accession #	P61769&P01892
Host	Human Cells
Species	Human
Predicted Molecular Mass	49.1 KDa
Formulation	Lyophilized from a 0.2 μm filtered solution of 20mM PB, 500mM NaCl, pH7.4.
Shipping	The product is shipped at ambient temperature. Upon receipt, store it immediately at the temperature listed below.
Stability&Storage	Store at ≤-70°C, stable for 6 months after receipt. Store at ≤-70°C, stable for 3 months under sterile conditions after opening. Please minimize freeze-thaw cycles.
Reconstitution	Always centrifuge tubes before opening. Do not mix by vortex or pipetting. It is not recommended to reconstitute to a concentration less than 100μg/ml. Dissolve the lyophilized protein in distilled water. Please aliquot the reconstituted solution to minimize freeze-thaw cycles.

SDS-PAGE image



Background

**Product Name: Recombinant Human HLA-A*0201 NY-ESO-1 complex Protein (C-Term)
Catalog #: PHH2307**

Alternative Names MHC; MY-ESO-1

Background NY-ESO-1 is a well-known cancer-testis antigen (CTAs) with re-expression in numerous cancer types. Its ability to elicit spontaneous humoral and cellular immune responses, together with its restricted expression pattern, have rendered it a good candidate target for cancer immunotherapy. Optimally assembled peptide-HLA-B2M trimer translocates to the surface of antigen-presenting cells, where it interacts with TCR and CD8 coreceptor on the surface of T cells.

Note

For Research Use Only , Not for Diagnostic Use.