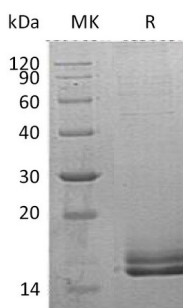


Summary

Name	Promotilin/MLN
Purity	Greater than 95% as determined by reducing SDS-PAGE
Endotoxin level	<1 EU/μg as determined by LAL test.
Construction	Recombinant Human Motilin is produced by our Mammalian expression system and the target gene encoding Phe26-Lys115 is expressed with a 6His tag at the C-terminus.
Accession #	P12872
Host	Human Cells
Species	Human
Predicted Molecular Mass	11.4 KDa
Formulation	Lyophilized from a 0.2 μm filtered solution of 20mM PB, 150mM NaCl, pH 7.4.
Shipping	The product is shipped at ambient temperature. Upon receipt, store it immediately at the temperature listed below.
Stability&Storage	Store at ≤-70°C, stable for 6 months after receipt. Store at ≤-70°C, stable for 3 months under sterile conditions after opening. Please minimize freeze-thaw cycles.
Reconstitution	Always centrifuge tubes before opening. Do not mix by vortex or pipetting. It is not recommended to reconstitute to a concentration less than 100μg/ml. Dissolve the lyophilized protein in distilled water. Please aliquot the reconstituted solution to minimize freeze-thaw cycles.

SDS-PAGE image



Background

Product Name: Recombinant Human Motilin (C-6His)
Catalog #: PHH1375



Alternative Names

Promotilin; Motilin-associated peptide; MLN

Background

Promotilin is a secreted protein that belongs to the motilin family. Human Promotilin cDNA encodes a 115 amino acid (aa) precursor that contains a 25 aa signal peptide and a 90 aa with motilin and motilin-associated peptide. It plays an important role in the regulation of interdigestive gastrointestinal motility and indirectly causes rhythmic contraction of duodenal and colonic smooth muscle.

Note

For Research Use Only , Not for Diagnostic Use.