

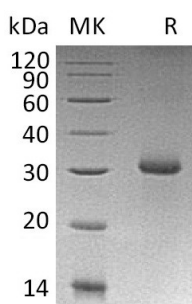
Product Name: Recombinant Human RGMA (N-6His)
Catalog #: PEH1437



Summary

Name	RGMA/Repulsive guidance molecule A
Purity	Greater than 95% as determined by reducing SDS-PAGE
Endotoxin level	<1 EU/μg as determined by LAL test.
Construction	Recombinant Human Repulsive Guidance Molecule A is produced by our E.coli expression system and the target gene encoding Pro169-Gly422 is expressed with a 6His tag at the N-terminus.
Accession #	AAI51133.1
Host	E.coli
Species	Human
Predicted Molecular Mass	29.8 KDa
Formulation	Supplied as a 0.2 μm filtered solution of 20mM PB, 10% Trehalose, 50% Glycerol, 1mM DTT, 0.05% Tween80, pH 7.8.
Shipping	The product is shipped on dry ice/polar packs. Upon receipt, store it immediately at the temperature listed below.
Stability&Storage	Store at ≤-70°C, stable for 6 months after receipt. Store at ≤-70°C, stable for 3 months under sterile conditions after opening. Please minimize freeze-thaw cycles.
Reconstitution	0.00.0

SDS-PAGE image



Background

Alternative Names Repulsive guidance molecule A; RGM domain family member A; RGM

Background Repulsive guidance molecule A (RGMA) is a cell membrane protein and belongs to the repulsive guidance molecule (RGM) family. It interacts with NEO1, BMP2 and

Product Name: Recombinant Human RGMA (N-6His)
Catalog #: PEH1437



BMP4. RGMA is a glycosylphosphatidylinositol-anchored glycoprotein that functions as an axon guidance protein in the developing and adult central nervous system. It helps guide Retinal Ganglion Cell (RGC) axons to the tectum in the midbrain. RGMA has been implicated to play an important role in the developing brain and in the scar tissue that forms after a brain injury. This protein may also function as a tumor suppressor in some cancers.

Note

For Research Use Only , Not for Diagnostic Use.