

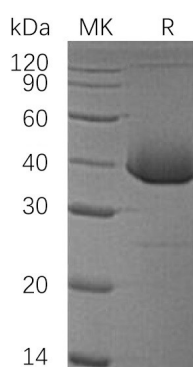
Product Name: Recombinant Human LDH-B (N-6His)
Catalog #: PEH1069



Summary

Name	LDH-B
Purity	Greater than 95% as determined by reducing SDS-PAGE
Endotoxin level	<1 EU/μg as determined by LAL test.
Construction	Recombinant Human L-Lactate Dehydrogenase B Chain is produced by our E.coli expression system and the target gene encoding Met1-Leu334 is expressed with a 6His tag at the N-terminus.
Accession #	P07195
Host	E.coli
Species	Human
Predicted Molecular Mass	38.8 KDa
Formulation	Supplied as a 0.2 μm filtered solution of 20mM Tris-HCl, 150mM NaCl, pH 8.0.
Shipping	The product is shipped on dry ice/polar packs. Upon receipt, store it immediately at the temperature listed below.
Stability&Storage	Store at ≤-70°C, stable for 6 months after receipt. Store at ≤-70°C, stable for 3 months under sterile conditions after opening. Please minimize freeze-thaw cycles.
Reconstitution	

SDS-PAGE image



Background

Alternative Names	L-lactate Dehydrogenase B Chain; LDH-B; LDH Heart Subunit; LDH-H; Renal Carcinoma Antigen NY-REN-46; LDHB
Background	L-Lactate Dehydrogenase B Chain (LDH-B) is a member of the lactate

Product Name: Recombinant Human LDH-B (N-6His)
Catalog #: PEH1069



dehydrogenase family that consists of three members, LDH-A, LDH-B and LDH-C; members of this family function as powerful markers for germ cell tumors. LDH-B is an oxidoreductase that catalyzes the interconversion of pyruvate and lactate with concomitant interconversion of NADH and NAD⁺. It converts pyruvate to lactate when oxygen is absent or in short supply and it performs the reverse reaction during the Cori cycle in the liver. It is also called Hydroxybutyrate Dehydrogenase (HBD) due to its ability to catalyze the oxidation of hydroxybutyrate.

Note

For Research Use Only , Not for Diagnostic Use.