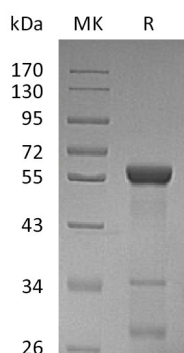


Summary

Name	LACTB2/ β -lactamase-like protein 2
Purity	Greater than 95% as determined by reducing SDS-PAGE
Endotoxin level	<1 EU/ μ g as determined by LAL test.
Construction	Recombinant Human Beta-Lactamase-Like Protein 2 is produced by our E.coli expression system and the target gene encoding Met1-Leu288 is expressed with a GST tag at the N-terminus.
Accession #	Q53H82
Host	E.coli
Species	Human
Predicted Molecular Mass	59.24 KDa
Formulation	Supplied as a 0.2 μ m filtered solution of PBS, 10% Glycerol, pH 7.5.
Shipping	The product is shipped on dry ice/polar packs. Upon receipt, store it immediately at the temperature listed below.
Stability&Storage	Store at \leq -70°C, stable for 6 months after receipt. Store at \leq -70°C, stable for 3 months under sterile conditions after opening. Please minimize freeze-thaw cycles.
Reconstitution	

SDS-PAGE image



Background

Alternative Names	Beta-Lactamase-Like Protein 2; LACTB2
Background	β -Lactamase-like Protein 2 (LACTB2) is a number of the metallo-beta-lactamase

Product Name: Recombinant Human LACTB2 (N-GST)
Catalog #: PEH1054



superfamily. LACTB2 also belongs to the Glyoxalase II family. LACTB2 is 288 amino acids long with 8 zinc-binding domains. The LACTB2 gene is expressed at high levels and annotates structural defects or features in 4 cDNA clones. LACTB2 proteins are expected to have hydrolase activity and metal ion-binding functions. LACTB2 protein is found to localize in mitochondrion. Other functions of LACTB2 is yet unknown.

Note

For Research Use Only , Not for Diagnostic Use.