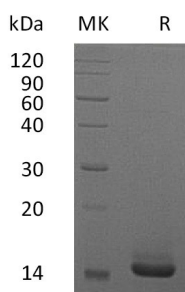


## Summary

<b>Name</b>	GM-CSF/CSF2/Granulocyte-macrophage colony-stimulating factor
<b>Purity</b>	Greater than 95% as determined by reducing SDS-PAGE
<b>Endotoxin level</b>	<0.01 EU/μg as determined by LAL test.
<b>Construction</b>	Recombinant Human Granulocyte-Macrophage Colony-Stimulating Factor is produced by our E.coli expression system and the target gene encoding Ala18-Glu144 is expressed.
<b>Accession #</b>	P04141
<b>Host</b>	E.coli
<b>Species</b>	Human
<b>Predicted Molecular Mass</b>	14.6 KDa
<b>Formulation</b>	Lyophilized from a 0.2 μm filtered solution of PBS, pH 7.4.
<b>Shipping</b>	The product is shipped at ambient temperature. Upon receipt, store it immediately at the temperature listed below.
<b>Stability&amp;Storage</b>	Lyophilized protein should be stored at ≤ -20°C, stable for one year after receipt. Reconstituted protein solution can be stored at 2-8°C for 2-7 days. Aliquots of reconstituted samples are stable at ≤ -20°C for 3 months.
<b>Reconstitution</b>	Always centrifuge tubes before opening. Do not mix by vortex or pipetting. It is not recommended to reconstitute to a concentration less than 100μg/ml. Dissolve the lyophilized protein in distilled water. Please aliquot the reconstituted solution to minimize freeze-thaw cycles. Always centrifuge tubes before opening. Do not mix by vortex or pipetting. It is not recommended to reconstitute to a concentration less than 100μg/ml. Dissolve the lyophilized protein in distilled water. Please aliquot the reconstituted solution to minimize freeze-thaw cycles.

## SDS-PAGE image



## Background

**Product Name: Recombinant Human GM-CSF (E. coli)**  
**Catalog #: PEH0747**



---

**Alternative Names**

Granulocyte-Macrophage Colony-Stimulating Factor; GM-CSF; Colony-Stimulating Factor; CSF; Molgramostin; Sargramostim; CSF2; GMCSF

**Background**

Granulocyte-Macrophage Colony Stimulating Factor (GM-CSF) was initially characterized as a growth factor that can support the in vitro colony formation of granulocyte-macrophage progenitors. It is produced by a number of different cell types (including activated T cells, B cells, macrophages, mast cells, endothelial cells and fibroblasts) in response to cytokine of immune and inflammatory stimuli. Besides granulocyte-macrophage progenitors, GM-CSF is also a growth factor for erythroid, megakaryocyte and eosinophil progenitors. On mature hematopoietic, monocytes/ macrophages and eosinophils. GM-CSF has a functional role on non-hematopoietic cells. It can induce human endothelial cells to migrate and proliferate. Additionally, GM-CSF can also stimulate the proliferation of a number of tumor cell lines, including osteogenic sarcoma, carcinoma and adenocarcinoma cell lines.

**Note**

For Research Use Only , Not for Diagnostic Use.