
Summary

Production Name	ZZZ3 Rabbit Polyclonal Antibody
Description	Rabbit Polyclonal Antibody
Host	Rabbit
Application	WB,ELISA
Reactivity	Human,Mouse,Rat

Performance

Conjugation	Unconjugated
Modification	Unmodified
Isotype	IgG
Clonality	Polyclonal
Form	Liquid
Storage	Store at 4°C short term. Aliquot and store at -20°C long term. Avoid freeze/thaw cycles.
Buffer	Liquid in PBS containing 50% glycerol, 0.5% BSA and 0.02% New type preservative N.
Purification	Affinity purification

Immunogen

Gene Name	ZZZ3
Alternative Names	ZZZ3; ZZ-type zinc finger-containing protein 3
Gene ID	26009.0
SwissProt ID	Q81YH5.The antiserum was produced against synthesized peptide derived from human ZZZ3. AA range:341-390

Application

Dilution Ratio	WB 1:500 - 1:2000. ELISA: 1:5000.
Molecular Weight	160kD

Background

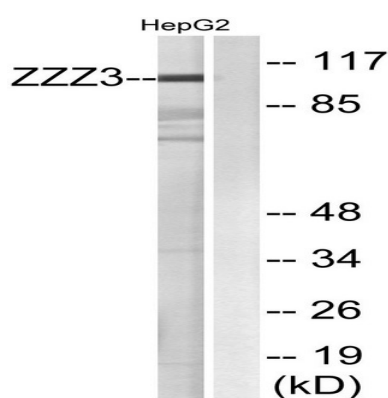
Product Name: ZZZ3 Rabbit Polyclonal Antibody
Catalog #: APRab20331



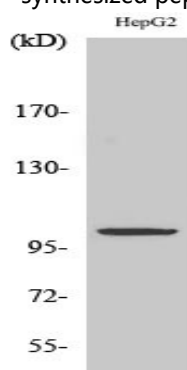
PTM:Phosphorylated upon DNA damage, probably by ATM or ATR.,similarity:Contains 1 HTH myb-type DNA-binding domain.,similarity:Contains 1 ZZ-type zinc finger.,PTM:Phosphorylated upon DNA damage, probably by ATM or ATR.,similarity:Contains 1 HTH myb-type DNA-binding domain.,similarity:Contains 1 ZZ-type zinc finger.,

Research Area

Image Data



Western blot analysis of lysates from HepG2 cells, using ZZZ3 Antibody. The lane on the right is blocked with the synthesized peptide.



Western Blot analysis of various cells using ZZZ3 Polyclonal Antibody. Secondary antibody was diluted at 1:20000 cells nucleus extracted by Minute TM Cytoplasmic and Nuclear Fractionation kit (SC-003, Inventbiotech, MN, USA) .

Note

For research use only.