
Summary

Production Name	ZIP1 Rabbit Polyclonal Antibody
Description	Rabbit Polyclonal Antibody
Host	Rabbit
Application	WB,ELISA
Reactivity	Human,Rat,Mouse

Performance

Conjugation	Unconjugated
Modification	Unmodified
Isotype	IgG
Clonality	Polyclonal
Form	Liquid
Storage	Store at 4°C short term. Aliquot and store at -20°C long term. Avoid freeze/thaw cycles.
Buffer	Liquid in PBS containing 50% glycerol, 0.5% BSA and 0.02% New type preservative N.
Purification	Affinity purification

Immunogen

Gene Name	SLC39A1 SLC39A1; IRT1; ZIP1; ZIRTL; CGI-08; CGI-71; Zinc transporter ZIP1; Solute carrier family 39 member 1; Zinc-iron-regulated transporter-like; Zrt- and Irt-like protein 1; ZIP-1;
Alternative Names	hZIP1
Gene ID	27173.0
SwissProt ID	Q9NY26.The antiserum was produced against synthesized peptide derived from human SLC39A1. AA range:111-160

Application

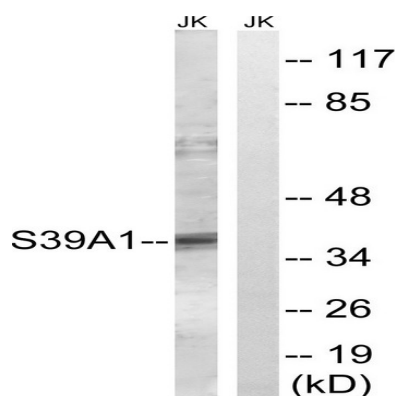
Dilution Ratio	WB 1:500 - 1:2000. ELISA: 1:5000.
Molecular Weight	38kD

Background

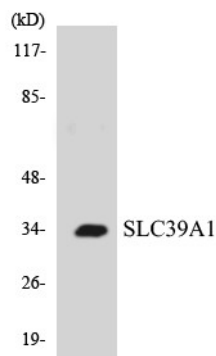
This gene encodes a member of the zinc-iron permease family. The encoded protein is localized to the cell membrane and acts as a zinc uptake transporter. This gene has been linked to prostate cancer, breast cancer, and Alzheimer's disease. Alternative splicing results in multiple transcript variants. [provided by RefSeq, Dec 2012],function:Mediates zinc uptake. May function as a major endogenous zinc uptake transporter in many cells of the body. Responsible for the rapid uptake and accumulation of physiologically effective zinc in prostate cells.,miscellaneous:Inhibited by Ni(2+) ions. Fe(2+) ions do not inhibit zinc uptake.,similarity:Belongs to the ZIP transporter (TC 2.A.5) family.,subcellular location:Shows a vesicular localization corresponding partially to the endoplasmic reticulum in several epithelial cell lines.,tissue specificity:Ubiquitous. Expressed in most adult and fetal tissues including the epidermis.,

Research Area

Image Data



Western blot analysis of lysates from Jurkat cells, using SLC39A1 Antibody. The lane on the right is blocked with the synthesized peptide.



Western blot analysis of the lysates from COLO205 cells using SLC39A1 antibody.

Product Name: ZIP1 Rabbit Polyclonal Antibody
Catalog #: APRab20109



Note

For research use only.