
Summary

Production Name	Tubulin γ Rabbit Polyclonal Antibody
Description	Rabbit Polyclonal Antibody
Host	Rabbit
Application	IHC,ELISA
Reactivity	Human,Mouse,Rat

Performance

Conjugation	Unconjugated
Modification	Unmodified
Isotype	IgG
Clonality	Polyclonal
Form	Liquid
Storage	Store at 4°C short term. Aliquot and store at -20°C long term. Avoid freeze/thaw cycles.
Buffer	Liquid in PBS containing 50% glycerol, 0.5% BSA and 0.02% New type preservative N.
Purification	Affinity purification

Immunogen

Gene Name	TUBG1 TUBG
Alternative Names	Tubulin gamma-1 chain (Gamma-1-tubulin;Gamma-tubulin complex component 1;GCP-1)
Gene ID	7283.0
SwissProt ID	P23258.Synthetic peptide from human protein at AA range: 380-440

Application

Dilution Ratio	IHC-p 1:50-200, ELISA 1:10000-20000.
Molecular Weight	

Background

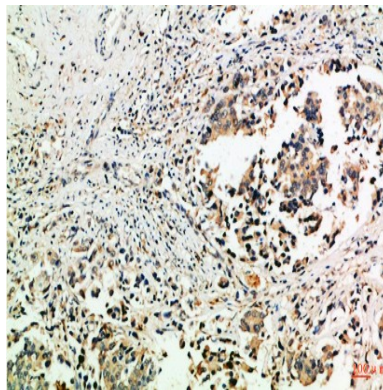
Product Name: Tubulin γ Rabbit Polyclonal Antibody
Catalog #: APRab19428



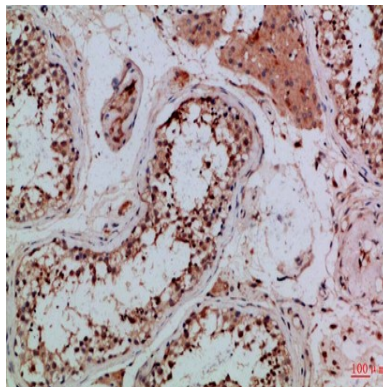
This gene encodes a member of the tubulin superfamily. The encoded protein localizes to the centrosome where it binds to microtubules as part of a complex referred to as the gamma-tubulin ring complex. The protein mediates microtubule nucleation and is required for microtubule formation and progression of the cell cycle. A pseudogene of this gene is found on chromosome 7. [provided by RefSeq, Jan 2009],function:Tubulin is the major constituent of microtubules. Gamma tubulin is found at microtubule organizing centers (MTOC) such as the spindle poles or the centrosome, suggesting that it is involved in the minus-end nucleation of microtubule assembly.,mass spectrometry: PubMed:11840567,similarity:Belongs to the tubulin family.,subunit:Interacts with GCP2 and GCP3. Interacts with B9D2.,

Research Area

Image Data

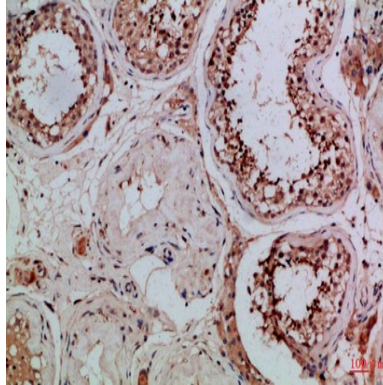


Immunohistochemical analysis of paraffin-embedded Human-breast-cancer, antibody was diluted at 1:100



Immunohistochemical analysis of paraffin-embedded Human-testis, antibody was diluted at 1:100

Product Name: Tubulin γ Rabbit Polyclonal Antibody
Catalog #: APRab19428



Immunohistochemical analysis of paraffin-embedded Human-testis, antibody was diluted at 1:100

Note

For research use only.