

Product Name: Tubulin α -3C/D/E Rabbit Polyclonal Antibody
Catalog #: APRab19425

Summary

Production Name	Tubulin α -3C/D/E Rabbit Polyclonal Antibody
Description	Rabbit Polyclonal Antibody
Host	Rabbit
Application	WB,ELISA
Reactivity	Human,Mouse,Rat

Performance

Conjugation	Unconjugated
Modification	Unmodified
Isotype	IgG
Clonality	Polyclonal
Form	Liquid
Storage	Store at 4°C short term. Aliquot and store at -20°C long term. Avoid freeze/thaw cycles.
Buffer	Liquid in PBS containing 50% glycerol, 0.5% BSA and 0.02% New type preservative N.
Purification	Affinity purification

Immunogen

Gene Name	TUBA3C/D/TUBA3E
Alternative Names	TUBA3C; TUBA2; TUBA3D; Tubulin alpha-3C/D chain; Alpha-tubulin 2; Alpha-tubulin 3C/D; Tubulin alpha-2 chain; TUBA3E; Tubulin alpha-3E chain; Alpha-tubulin 3E
Gene ID	113457/7278/112714
SwissProt ID	Q13748/Q6PEY2.The antiserum was produced against synthesized peptide derived from human TUBA3C/E. AA range:201-250

Application

Dilution Ratio	WB 1:500 - 1:2000. ELISA: 1:5000.
Molecular Weight	50kD

Product Name: Tubulin α -3C/D/E Rabbit Polyclonal Antibody
Catalog #: APRab19425



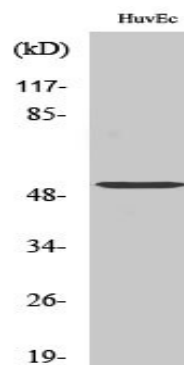
Background

Microtubules of the eukaryotic cytoskeleton perform essential and diverse functions and are composed of a heterodimer of alpha and beta tubulin. The genes encoding these microtubule constituents are part of the tubulin superfamily, which is composed of six distinct families. Genes from the alpha, beta and gamma tubulin families are found in all eukaryotes. The alpha and beta tubulins represent the major components of microtubules, while gamma tubulin plays a critical role in the nucleation of microtubule assembly. There are multiple alpha and beta tubulin genes and they are highly conserved among and between species. This gene is an alpha tubulin gene that encodes a protein 99% identical to the mouse testis-specific Tuba3 and Tuba7 gene products. This gene is located in the 13q11 region, which is associated with the genetic diseases Clouston hidrotic ectodermal dysplasia and Kabuki syndrome. [providfunction:Tubulin is the major constituent of microtubules. It binds two moles of GTP, one at an exchangeable site on the beta chain and one at a non-exchangeable site on the alpha-chain.,online information:Tubulin entry,PTM:Undergoes a tyrosination/detyrosination cycle, the cyclic removal and re-addition of a C-terminal tyrosine residue by the enzymes tubulin tyrosine carboxypeptidase (TTCP) and tubulin tyrosine ligase (TTL), respectively.,similarity:Belongs to the tubulin family.,subunit:Dimer of alpha and beta chains.,tissue specificity:Testis specific.,

Research Area

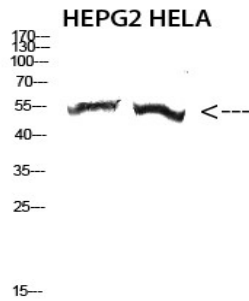
Gap junction;Pathogenic Escherichia coli infection;

Image Data



Western Blot analysis of various cells using Tubulin α -3C/D/E Polyclonal Antibody diluted at 1 : 2000. Secondary antibody was diluted at 1:20000

Product Name: Tubulin α -3C/D/E Rabbit Polyclonal Antibody
Catalog #: APRab19425



Western Blot analysis of HEPG2 HELA cells using Antibody diluted at 2000. Secondary antibody was diluted at 1:20000

Note

For research use only.