
Summary

Production Name	TMEM145 Rabbit Polyclonal Antibody
Description	Rabbit Polyclonal Antibody
Host	Rabbit
Application	WB,ELISA
Reactivity	Human,Mouse

Performance

Conjugation	Unconjugated
Modification	Unmodified
Isotype	IgG
Clonality	Polyclonal
Form	Liquid
Storage	Store at 4°C short term. Aliquot and store at -20°C long term. Avoid freeze/thaw cycles.
Buffer	Liquid in PBS containing 50% glycerol, 0.5% BSA and 0.02% New type preservative N.
Purification	Affinity purification

Immunogen

Gene Name	TMEM145
Alternative Names	TMEM145; Transmembrane protein 145
Gene ID	284339.0
SwissProt ID	Q8NBT3.The antiserum was produced against synthesized peptide derived from human TMEM145. AA range:58-107

Application

Dilution Ratio	WB 1:500 - 1:2000. ELISA: 1:10000
Molecular Weight	56kD

Background

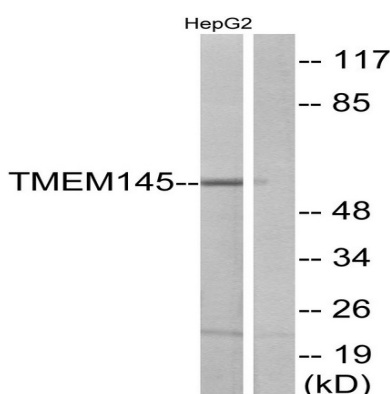
Product Name: TMEM145 Rabbit Polyclonal Antibody
Catalog #: APRab19047



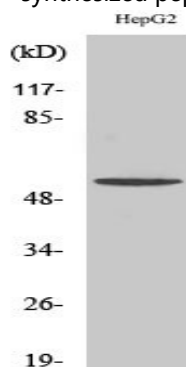
TMEM145 (transmembrane protein 145) is a 493 amino acid protein encoded by a gene mapping to human chromosome 19. Consisting of around 63 million bases with over 1,400 genes, chromosome 19 makes up over 2% of human genomic DNA. Chromosome 19 includes a diversity of interesting genes and is recognized for having the greatest gene density of the human chromosomes. It is the genetic home for a number of immunoglobulin superfamily members including the killer cell and leukocyte Ig-like receptors, a number of ICAMs, the CEACAM and PSG family, and Fc α receptors. Key genes for eye color and hair color also map to chromosome 19. Peutz-Jeghers syndrome, spinocerebellar ataxia type 6, the stroke disorder CADASIL, hypercholesterolemia and insulin-dependent diabetes have been linked to chromosome 19. Translocations with chromosome 19 and chromosome 14 can be seen in some lymphoproliferative disorders and typically involve the proto-oncogene BCL3.

Research Area

Image Data



Western blot analysis of lysates from HepG2 cells, using TMEM145 Antibody. The lane on the right is blocked with the synthesized peptide.



Western Blot analysis of various cells using TMEM145 Polyclonal Antibody. Secondary antibody was diluted at 1:20000

Product Name: TMEM145 Rabbit Polyclonal Antibody
Catalog #: APRab19047



Note

For research use only.