

**Product Name: Thymidine Kinase Rabbit Polyclonal Antibody**  
**Catalog #: APRab18899**



---

## Summary

<b>Production Name</b>	Thymidine Kinase Rabbit Polyclonal Antibody
<b>Description</b>	Rabbit Polyclonal Antibody
<b>Host</b>	Rabbit
<b>Application</b>	WB
<b>Reactivity</b>	Human,Monkey

## Performance

<b>Conjugation</b>	Unconjugated
<b>Modification</b>	Unmodified
<b>Isotype</b>	IgG
<b>Clonality</b>	Polyclonal
<b>Form</b>	Liquid
<b>Storage</b>	Store at 4°C short term. Aliquot and store at -20°C long term. Avoid freeze/thaw cycles.
<b>Buffer</b>	Liquid in PBS containing 50% glycerol, 0.5% BSA and 0.02% New type preservative N.
<b>Purification</b>	Affinity purification

## Immunogen

<b>Gene Name</b>	TK1
<b>Alternative Names</b>	TK1; Thymidine kinase; cytosolic
<b>Gene ID</b>	7083.0
<b>SwissProt ID</b>	P04183.The antiserum was produced against synthesized peptide derived from human KITH. AA range:161-210

## Application

<b>Dilution Ratio</b>	WB 1:500-2000
<b>Molecular Weight</b>	25kD

**Product Name: Thymidine Kinase Rabbit Polyclonal Antibody**  
**Catalog #: APRab18899**

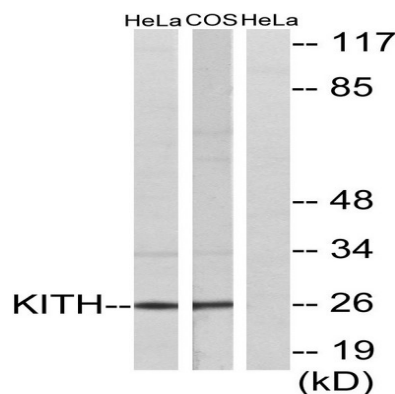
### Background

catalytic activity:ATP + thymidine = ADP + thymidine 5'-phosphate.,miscellaneous:Two forms have been identified in animal cells, one in cytosol and one in mitochondria. Activity of the cytosolic enzyme is high in proliferating cells and peaks during the S-phase of the cell cycle; it is very low in resting cells.,PTM:Phosphorylated on Ser-13 in mitosis.,similarity:Belongs to the thymidine kinase family.,catalytic activity:ATP + thymidine = ADP + thymidine 5'-phosphate.,miscellaneous:Two forms have been identified in animal cells, one in cytosol and one in mitochondria. Activity of the cytosolic enzyme is high in proliferating cells and peaks during the S-phase of the cell cycle; it is very low in resting cells.,PTM:Phosphorylated on Ser-13 in mitosis.,similarity:Belongs to the thymidine kinase family.,

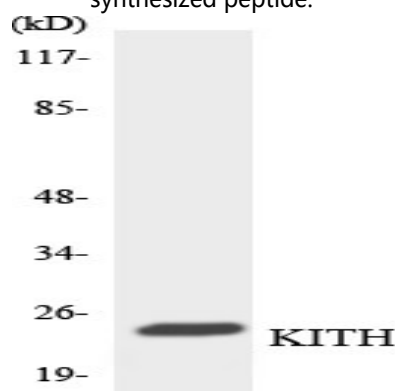
### Research Area

Pyrimidine metabolism;Drug metabolism;

### Image Data



Western blot analysis of lysates from HeLa and COS7 cells, using KITH Antibody. The lane on the right is blocked with the synthesized peptide.



Western blot analysis of the lysates from RAW264.7 cells using KITH antibody.

**Product Name: Thymidine Kinase Rabbit Polyclonal  
Antibody**  
**Catalog #: APRab18899**



---

**Note**

For research use only.