

---

## Summary

<b>Production Name</b>	TEF-4 Rabbit Polyclonal Antibody
<b>Description</b>	Rabbit Polyclonal Antibody
<b>Host</b>	Rabbit
<b>Application</b>	IF,IHC,WB,ELISA
<b>Reactivity</b>	Human,Mouse

## Performance

<b>Conjugation</b>	Unconjugated
<b>Modification</b>	Unmodified
<b>Isotype</b>	IgG
<b>Clonality</b>	Polyclonal
<b>Form</b>	Liquid
<b>Storage</b>	Store at 4°C short term. Aliquot and store at -20°C long term. Avoid freeze/thaw cycles.
<b>Buffer</b>	Liquid in PBS containing 50% glycerol, 0.5% BSA and 0.02% New type preservative N.
<b>Purification</b>	Affinity purification

## Immunogen

<b>Gene Name</b>	TEAD2
<b>Alternative Names</b>	TEAD2; TEF4; Transcriptional enhancer factor TEF-4; TEA domain family member 2; TEAD-2
<b>Gene ID</b>	8463.0
<b>SwissProt ID</b>	Q15562.The antiserum was produced against synthesized peptide derived from human TEAD2. AA range:71-120

## Application

<b>Dilution Ratio</b>	WB 1:500-2000 IHC 1:100 - 1:300. IF 1:200 - 1:1000. ELISA: 1:20000. Not yet tested in other applications.
<b>Molecular Weight</b>	

**Product Name: TEF-4 Rabbit Polyclonal Antibody**  
**Catalog #: APRab18775**

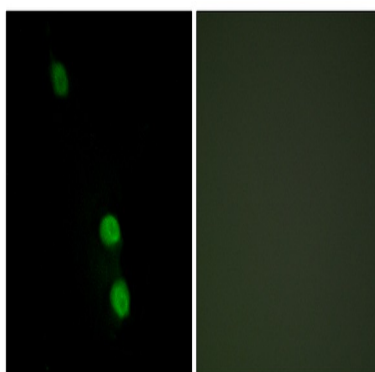


## Background

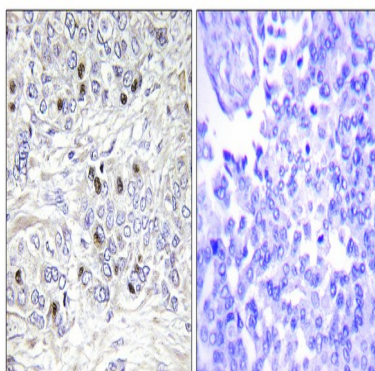
function: Putative transcription factor that binds to the SPH and GT-IIC "enhancers" (5'-GTGGAATGT-3'). May be involved in the gene regulation of neural development. Binds to the M-CAT motif., similarity: Contains 1 TEA DNA-binding domain., function: Putative transcription factor that binds to the SPH and GT-IIC "enhancers" (5'-GTGGAATGT-3'). May be involved in the gene regulation of neural development. Binds to the M-CAT motif., similarity: Contains 1 TEA DNA-binding domain.,

## Research Area

## Image Data

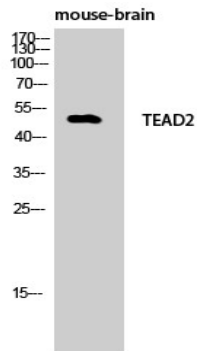


Immunofluorescence analysis of HepG2 cells, using TEAD2 Antibody. The picture on the right is blocked with the synthesized peptide.



Immunohistochemistry analysis of paraffin-embedded human breast carcinoma tissue, using TEAD2 Antibody. The picture on the right is blocked with the synthesized peptide.

**Product Name: TEF-4 Rabbit Polyclonal Antibody**  
**Catalog #: APRab18775**



Western Blot analysis of mouse-brain cells using TEF-4 Polyclonal Antibody cells nucleus extracted by Minute TM Cytoplasmic and Nuclear Fractionation kit (SC-003, Inventbiotech, MN, USA) .

**Note**

For research use only.