

---

## Summary

<b>Production Name</b>	T2R45 Rabbit Polyclonal Antibody
<b>Description</b>	Rabbit Polyclonal Antibody
<b>Host</b>	Rabbit
<b>Application</b>	WB,ELISA
<b>Reactivity</b>	Human,Rat,Mouse

## Performance

<b>Conjugation</b>	Unconjugated
<b>Modification</b>	Unmodified
<b>Isotype</b>	IgG
<b>Clonality</b>	Polyclonal
<b>Form</b>	Liquid
<b>Storage</b>	Store at 4°C short term. Aliquot and store at -20°C long term. Avoid freeze/thaw cycles.
<b>Buffer</b>	Liquid in PBS containing 50% glycerol, 0.5% BSA and 0.02% New type preservative N.
<b>Purification</b>	Affinity purification

## Immunogen

<b>Gene Name</b>	TAS2R45
<b>Alternative Names</b>	TAS2R45; GPR59; Taste receptor type 2 member 45; T2R45; G-protein coupled receptor 59
<b>Gene ID</b>	259291.0
<b>SwissProt ID</b>	P59539.The antiserum was produced against synthesized peptide derived from human TAS2R45. AA range:221-270

## Application

<b>Dilution Ratio</b>	WB 1:500 - 1:2000. ELISA: 1:5000.
<b>Molecular Weight</b>	35kD

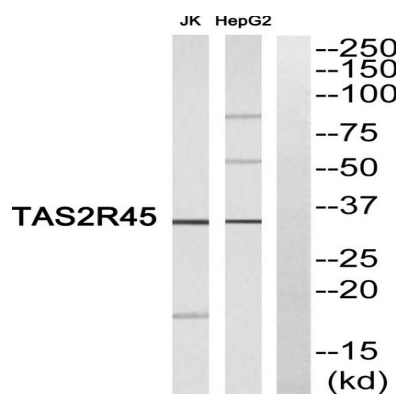
## Background

function: Receptor that may play a role in the perception of bitterness and is gustducin-linked. May play a role in sensing the chemical composition of the gastrointestinal content. The activity of this receptor may stimulate alpha gustducin, mediate PLC-beta-2 activation and lead to the gating of TRPM5., miscellaneous: Most taste cells may be activated by a limited number of bitter compounds; individual taste cells can discriminate among bitter stimuli., similarity: Belongs to the G-protein coupled receptor T2R family., tissue specificity: Expressed in subsets of taste receptor cells of the tongue and exclusively in gustducin-positive cells., function: Receptor that may play a role in the perception of bitterness and is gustducin-linked. May play a role in sensing the chemical composition of the gastrointestinal content. The activity of this receptor may stimulate alpha gustducin, mediate PLC-beta-2 activation and lead to the gating of TRPM5., miscellaneous: Most taste cells may be activated by a limited number of bitter compounds; individual taste cells can discriminate among bitter stimuli., similarity: Belongs to the G-protein coupled receptor T2R family., tissue specificity: Expressed in subsets of taste receptor cells of the tongue and exclusively in gustducin-positive cells.,

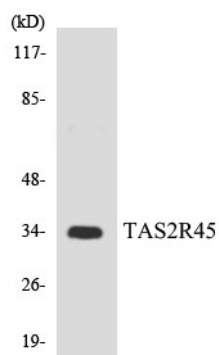
## Research Area

Taste transduction;

## Image Data



Western blot analysis of TAS2R45 Antibody. The lane on the right is blocked with the TAS2R45 peptide.



Western blot analysis of the lysates from HepG2 cells using TAS2R45 antibody.

**Product Name: T2R45 Rabbit Polyclonal Antibody**  
**Catalog #: APRab18571**

---



**Note**

For research use only.