

## Summary

<b>Production Name</b>	SR-1D Rabbit Polyclonal Antibody
<b>Description</b>	Rabbit Polyclonal Antibody
<b>Host</b>	Rabbit
<b>Application</b>	WB,IHC,ELISA
<b>Reactivity</b>	Human,Mouse,Rat

## Performance

<b>Conjugation</b>	Unconjugated
<b>Modification</b>	Unmodified
<b>Isotype</b>	IgG
<b>Clonality</b>	Polyclonal
<b>Form</b>	Liquid
<b>Storage</b>	Store at 4°C short term. Aliquot and store at -20°C long term. Avoid freeze/thaw cycles.
<b>Buffer</b>	Liquid in PBS containing 50% glycerol, 0.5% BSA and 0.02% New type preservative N.
<b>Purification</b>	Affinity purification

## Immunogen

<b>Gene Name</b>	HTR1D
<b>Alternative Names</b>	HTR1D; HTR1DA; HTRL; 5-hydroxytryptamine receptor 1D; 5-HT-1D; 5-HT1D; 5-HT-1D-alpha; Serotonin receptor 1D
<b>Gene ID</b>	3352.0
<b>SwissProt ID</b>	P28221.Synthesized peptide derived from SR-1D . at AA range: 120-200

## Application

<b>Dilution Ratio</b>	WB 1:500 - 1:2000. IHC-p: 1:100-1:300. ELISA: 1:10000..
<b>Molecular Weight</b>	41kD

## Background

**Product Name: SR-1D Rabbit Polyclonal Antibody**  
**Catalog #: APRab18244**

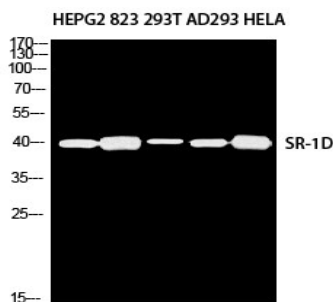


function: This is one of the several different receptors for 5-hydroxytryptamine (serotonin), a biogenic hormone that functions as a neurotransmitter, a hormone, and a mitogen. The activity of this receptor is mediated by G proteins that inhibit adenylate cyclase activity., similarity: Belongs to the G-protein coupled receptor 1 family., function: This is one of the several different receptors for 5-hydroxytryptamine (serotonin), a biogenic hormone that functions as a neurotransmitter, a hormone, and a mitogen. The activity of this receptor is mediated by G proteins that inhibit adenylate cyclase activity., similarity: Belongs to the G-protein coupled receptor 1 family.,

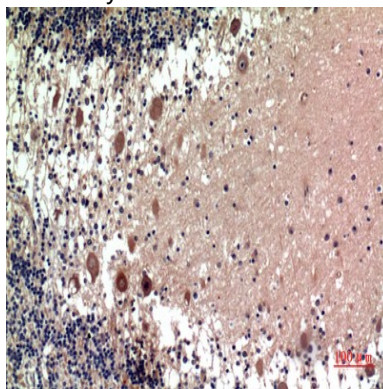
## Research Area

Neuroactive ligand-receptor interaction;

## Image Data



Western blot analysis of HEPG2 823 293T AD293 HELA using SR-1D antibody. Antibody was diluted at 1:500. Secondary antibody was diluted at 1:20000



Immunohistochemical analysis of paraffin-embedded human-brain, antibody was diluted at 1:100

## Note

For research use only.