

**Product Name: SMYD2 Rabbit Polyclonal Antibody**  
**Catalog #: APRab18039**



## Summary

<b>Production Name</b>	SMYD2 Rabbit Polyclonal Antibody
<b>Description</b>	Rabbit Polyclonal Antibody
<b>Host</b>	Rabbit
<b>Application</b>	WB,ELISA
<b>Reactivity</b>	Human,Mouse,Rat

## Performance

<b>Conjugation</b>	Unconjugated
<b>Modification</b>	Unmodified
<b>Isotype</b>	IgG
<b>Clonality</b>	Polyclonal
<b>Form</b>	Liquid
<b>Storage</b>	Store at 4°C short term. Aliquot and store at -20°C long term. Avoid freeze/thaw cycles.
<b>Buffer</b>	Liquid in PBS containing 50% glycerol, 0.5% BSA and 0.02% New type preservative N.
<b>Purification</b>	Affinity purification

## Immunogen

<b>Gene Name</b>	SMYD2
<b>Alternative Names</b>	SMYD2; KMT3C; N-lysine methyltransferase SMYD2; HSKM-B; Histone methyltransferase SMYD2; Lysine N-methyltransferase 3C; SET and MYND domain-containing protein 2
<b>Gene ID</b>	56950.0
<b>SwissProt ID</b>	Q9NRG4.The antiserum was produced against synthesized peptide derived from human SMYD2. AA range:99-148

## Application

<b>Dilution Ratio</b>	WB 1:500-2000 ELISA 2000-20000
<b>Molecular Weight</b>	50kD

**Product Name: SMYD2 Rabbit Polyclonal Antibody**  
**Catalog #: APRab18039**

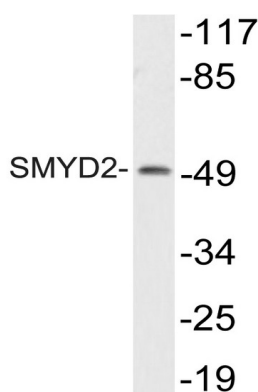


## Background

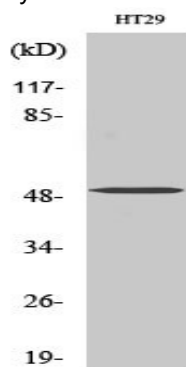
SET and MYND domain containing 2(SMYD2) Homo sapiens SET domain-containing proteins, such as SMYD2, catalyze lysine methylation (Brown et al., 2006 [PubMed 16805913]).[supplied by OMIM, Nov 2008],similarity:Contains 1 MYND-type zinc finger.,similarity:Contains 1 SET domain.,

## Research Area

## Image Data



Western blot analysis of lysate from HT29 cells, using SMYD2 antibody.



Western Blot analysis of various cells using SMYD2 Polyclonal Antibody diluted at 1: 2000

## Note

For research use only.