

## Summary

<b>Production Name</b>	SLC10A7 Rabbit Polyclonal Antibody
<b>Description</b>	Rabbit Polyclonal Antibody
<b>Host</b>	Rabbit
<b>Application</b>	WB,ELISA
<b>Reactivity</b>	Human,Mouse,Rat

## Performance

<b>Conjugation</b>	Unconjugated
<b>Modification</b>	Unmodified
<b>Isotype</b>	IgG
<b>Clonality</b>	Polyclonal
<b>Form</b>	Liquid
<b>Storage</b>	Store at 4°C short term. Aliquot and store at -20°C long term. Avoid freeze/thaw cycles.
<b>Buffer</b>	Liquid in PBS containing 50% glycerol, 0.5% BSA and 0.02% New type preservative N.
<b>Purification</b>	Affinity purification

## Immunogen

<b>Gene Name</b>	SLC10A7
<b>Alternative Names</b>	SLC10A7; C4orf13; P7; PSEC0051; Sodium/bile acid cotransporter 7; Na(+)/bile acid cotransporter 7; Solute carrier family 10 member 7
<b>Gene ID</b>	84068.0
<b>SwissProt ID</b>	Q0GE19.The antiserum was produced against synthesized peptide derived from human SLC10A7. AA range:168-217

## Application

<b>Dilution Ratio</b>	WB 1:500-2000 ELISA 2000-20000
<b>Molecular Weight</b>	39kD

**Product Name: SLC10A7 Rabbit Polyclonal Antibody**  
**Catalog #: APRab17951**

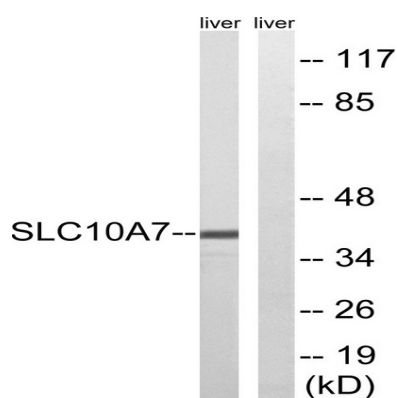


## Background

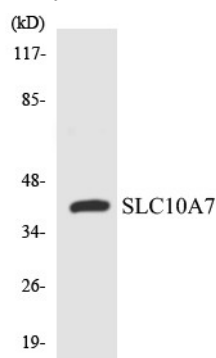
similarity:Belongs to the sodium:bile acid symporter family.,similarity:Belongs to the sodium:bile acid symporter family.,

## Research Area

## Image Data



Western blot analysis of lysates from mouse liver, using SLC10A7 Antibody. The lane on the right is blocked with the synthesized peptide.



Western blot analysis of the lysates from 293 cells using SLC10A7 antibody.

## Note

For research use only.