

Product Name: SH2D5 Rabbit Polyclonal Antibody
Catalog #: APRab17837



Summary

Production Name	SH2D5 Rabbit Polyclonal Antibody
Description	Rabbit Polyclonal Antibody
Host	Rabbit
Application	WB,ELISA
Reactivity	Human,Mouse,Rat

Performance

Conjugation	Unconjugated
Modification	Unmodified
Isotype	IgG
Clonality	Polyclonal
Form	Liquid
Storage	Store at 4°C short term. Aliquot and store at -20°C long term. Avoid freeze/thaw cycles.
Buffer	Liquid in PBS containing 50% glycerol, 0.5% BSA and 0.02% New type preservative N.
Purification	Affinity purification

Immunogen

Gene Name	SH2D5
Alternative Names	SH2D5; SH2 domain-containing protein 5
Gene ID	400745.0
SwissProt ID	Q6ZV89.The antiserum was produced against synthesized peptide derived from human SH2D5. AA range:281-330

Application

Dilution Ratio	WB 1:500-2000 ELISA 2000-20000
Molecular Weight	35kD

Background

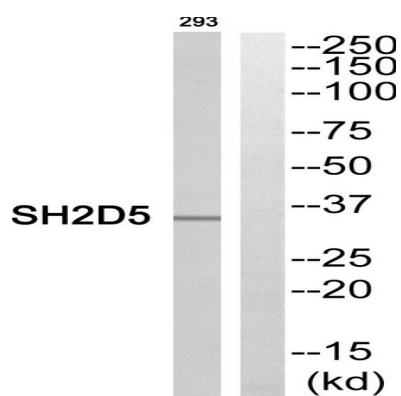
Product Name: SH2D5 Rabbit Polyclonal Antibody
Catalog #: APRab17837



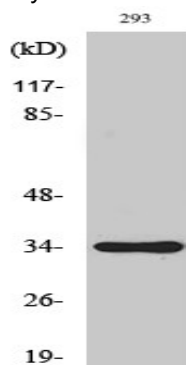
similarity:Contains 1 SH2 domain.,similarity:Contains 1 SH2 domain.,

Research Area

Image Data



Western blot analysis of SH2D5 Antibody. The lane on the right is blocked with the SH2D5 peptide.



Western Blot analysis of various cells using SH2D5 Polyclonal Antibody

Note

For research use only.