

Summary

Production Name	SEC22B Rabbit Polyclonal Antibody
Description	Rabbit Polyclonal Antibody
Host	Rabbit
Application	WB,IHC,ELISA
Reactivity	Human,Mouse,Rat

Performance

Conjugation	Unconjugated
Modification	Unmodified
Isotype	IgG
Clonality	Polyclonal
Form	Liquid
Storage	Store at 4°C short term. Aliquot and store at -20°C long term. Avoid freeze/thaw cycles.
Buffer	Liquid in PBS containing 50% glycerol, 0.5% BSA and 0.02% New type preservative N.
Purification	Affinity purification

Immunogen

Gene Name	SEC22B SEC22B; SEC22L1; Vesicle-trafficking protein SEC22b; ER-Golgi SNARE of 24 kDa; ERS-24; ERS24; SEC22 vesicle-trafficking protein homolog B; SEC22 vesicle-trafficking protein-like 1
Alternative Names	
Gene ID	9554.0
SwissProt ID	O75396.Synthesized peptide derived from the Internal region of human SEC22B.

Application

Dilution Ratio	WB 1:500 - 1:2000. IHC-p: 1:100-1:300. ELISA: 1:10000..
Molecular Weight	23kD

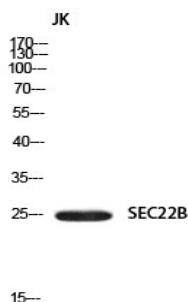
Background

The protein encoded by this gene is a member of the SEC22 family of vesicle trafficking proteins. It seems to complex with SNARE and it is thought to play a role in the ER-Golgi protein trafficking. This protein has strong similarity to *Mus musculus* and *Cricetulus griseus* proteins. [provided by RefSeq, Sep 2009], function: SNARE involved in targeting and fusion of ER-derived transport vesicles with the Golgi complex as well as Golgi-derived retrograde transport vesicles with the ER., PTM: Phosphorylated upon DNA damage, probably by ATM or ATR., similarity: Belongs to the synaptobrevin family., similarity: Contains 1 longin domain., similarity: Contains 1 v-SNARE coiled-coil homology domain., subcellular location: Identified by mass spectrometry in melanosome fractions from stage I to stage IV., subunit: Component of two distinct SNARE complexes consisting of STX5, GOSR2/BOS1, BET1 and SEC22B or STX18, USE1L, BNIP1/SEC20L and SEC22B. YKT6 can probably replace SEC22B in either complex.,

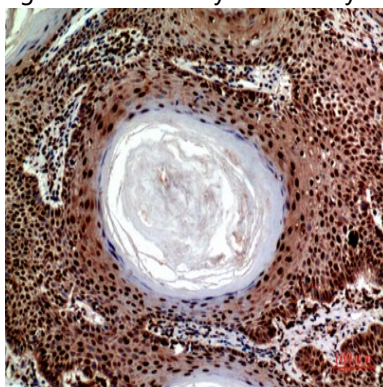
Research Area

SNARE interactions in vesicular transport;

Image Data



Western blot analysis of JK using SEC22B antibody.. Secondary antibody was diluted at 1:20000



Immunohistochemical analysis of paraffin-embedded human-skin, antibody was diluted at 1:100

Product Name: SEC22B Rabbit Polyclonal Antibody
Catalog #: APRab17691



Note

For research use only.