

Summary

Production Name	SCYL1BP1 Rabbit Polyclonal Antibody
Description	Rabbit Polyclonal Antibody
Host	Rabbit
Application	WB,ELISA
Reactivity	Human,Mouse,Rat

Performance

Conjugation	Unconjugated
Modification	Unmodified
Isotype	IgG
Clonality	Polyclonal
Form	Liquid
Storage	Store at 4°C short term. Aliquot and store at -20°C long term. Avoid freeze/thaw cycles.
Buffer	Liquid in PBS containing 50% glycerol, 0.5% BSA and 0.02% New type preservative N.
Purification	Affinity purification

Immunogen

Gene Name	GORAB
Alternative Names	GORAB; NTKLBP1; SCYL1BP1; RAB6-interacting golgin; N-terminal kinase-like-binding protein 1; NTKL-BP1; NTKL-binding protein 1; hNTKL-BP1; SCY1-like 1-binding protein 1; SCYL1-BP1; SCYL1-binding protein 1
Gene ID	92344.0
SwissProt ID	Q5T7V8.The antiserum was produced against synthesized peptide derived from the N-terminal region of human GORAB. AA range:1-50

Application

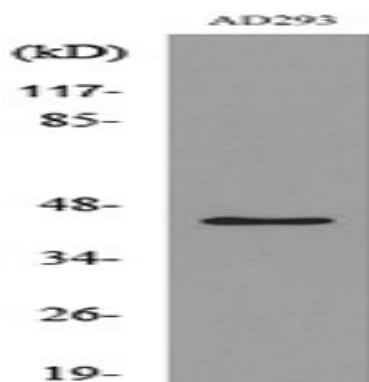
Dilution Ratio	WB 1:500-2000 ELISA 2000-20000
Molecular Weight	45kD

Background

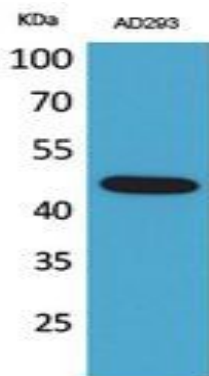
golgin, RAB6 interacting(GORAB) Homo sapiens This gene encodes a member of the golgin family, a group of coiled-coil proteins localized to the Golgi. The encoded protein may function in the secretory pathway. The encoded protein, which also localizes to the cytoplasm, was identified by interactions with the N-terminal kinase-like protein, and thus it may function in mitosis. Mutations in this gene have been associated with geroderma osteodysplastica. Alternatively spliced transcript variants have been described. [provided by RefSeq, Mar 2009],caution:It is uncertain whether Met-1 or Met-26 is the initiator.,disease:Defects in GORAB are the cause of geroderma osteodysplasticum (GO) [MIM:231070]; also known as geroderma osteodysplastica or Walt Disney dwarfism. GO is a rare autosomal recessive disorder characterized by lax, wrinkled skin, joint laxity and a typical face with a prematurely aged appearance. Skeletal signs include severe osteoporosis leading to frequent fractures, malar and mandibular hypoplasia and a variable degree of growth retardation.,similarity:Belongs to the GORAB family.,subunit:Interacts with SCYL1 (By similarity). Interacts with RCHY1 and RAB6A/RAB6.,

Research Area

Image Data



Western blot analysis of lysate from AD293 cells, using GORAB Antibody.



Product Name: SCYL1BP1 Rabbit Polyclonal Antibody
Catalog #: APRab17673



Western Blot analysis of AD293 cells using SCYL1BP1 Polyclonal Antibody.. Secondary antibody was diluted at 1:20000

Note

For research use only.