

---

## Summary

|                        |                                   |
|------------------------|-----------------------------------|
| <b>Production Name</b> | S-100Z Rabbit Polyclonal Antibody |
| <b>Description</b>     | Rabbit Polyclonal Antibody        |
| <b>Host</b>            | Rabbit                            |
| <b>Application</b>     | WB,ELISA                          |
| <b>Reactivity</b>      | Human,Rat,Mouse                   |

## Performance

|                     |  |
|---------------------|--|
| <b>Conjugation</b>  | Unconjugated   |
| <b>Modification</b> | Unmodified   |
| <b>Isotype</b>      | IgG  |
| <b>Clonality</b>    | Polyclonal   |
| <b>Form</b>         | Liquid   |
| <b>Storage</b>      | Store at 4°C short term. Aliquot and store at -20°C long term. Avoid freeze/thaw cycles. |
| <b>Buffer</b>       | Liquid in PBS containing 50% glycerol, 0.5% BSA and 0.02% New type preservative N.       |
| <b>Purification</b> | Affinity purification  |

## Immunogen

|                          |   |
|--------------------------|---|
| <b>Gene Name</b>         | S100Z   |
| <b>Alternative Names</b> | S100Z; Protein S100-Z; S100 calcium-binding protein Z   |
| <b>Gene ID</b>           | 170591.0  |
| <b>SwissProt ID</b>      | Q8WXG8.The antiserum was produced against synthesized peptide derived from human S100Z. AA range:2-51 |

## Application

|                         |                                     |
|-------------------------|-------------------------------------|
| <b>Dilution Ratio</b>   | WB 1:500 - 1:2000. ELISA: 1:20000.. |
| <b>Molecular Weight</b> | 12kD                                |

## Background

---

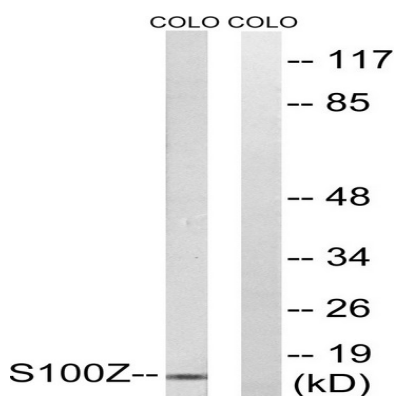
**Product Name: S-100Z Rabbit Polyclonal Antibody**  
**Catalog #: APRab17478**



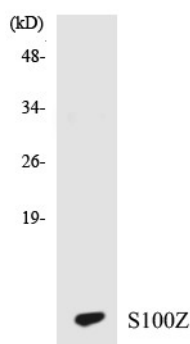
Members of the S100 protein family contain 2 calcium-binding EF-hands and exhibit cell-type specific expression patterns. For additional background information on S100 proteins, see MIM 114085.[supplied by OMIM, Mar 2008],miscellaneous:This protein binds two calcium ions.,similarity:Belongs to the S-100 family.,similarity:Contains 2 EF-hand domains.,subunit:Homodimer. Interacts with S100P.,tissue specificity:Highest level of expression in spleen and leukocytes.,

## Research Area

## Image Data

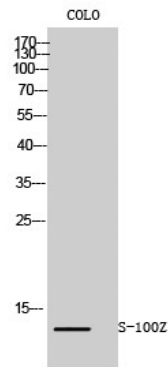


Western blot analysis of lysates from COLO cells, using S100Z Antibody. The lane on the right is blocked with the synthesized peptide.



Western blot analysis of the lysates from HT-29 cells using S100Z antibody.

**Product Name: S-100Z Rabbit Polyclonal Antibody**  
**Catalog #: APRab17478**



Western Blot analysis of COLO cells using S-100Z Polyclonal Antibody

**Note**

For research use only.