

Summary

| | |
|------------------------|----------------------------------|
| Production Name | RRP7A Rabbit Polyclonal Antibody |
| Description | Rabbit Polyclonal Antibody |
| Host | Rabbit |
| Application | WB,IHC,ELISA |
| Reactivity | Human,Mouse,Rat |

Performance

| | |
|---------------------|--|
| Conjugation | Unconjugated |
| Modification | Unmodified |
| Isotype | IgG |
| Clonality | Polyclonal |
| Form | Liquid |
| Storage | Store at 4°C short term. Aliquot and store at -20°C long term. Avoid freeze/thaw cycles. |
| Buffer | Liquid in PBS containing 50% glycerol, 0.5% BSA and 0.02% New type preservative N. |
| Purification | Affinity purification |

Immunogen

| | |
|--------------------------|---|
| Gene Name | RRP7A RRP7A; CGI-96; Ribosomal RNA-processing protein 7 homolog A; Gastric cancer antigen Zg14; |
| Alternative Names | RRP7B; Putative ribosomal RNA-processing protein 7 homolog B; Putative gastric cancer antigen Zg14-like protein |
| Gene ID | 27341.0 |
| SwissProt ID | Q9Y3A4.Synthesized peptide derived from the C-terminal region of human RRP7A. |

Application

| | |
|-------------------------|--|
| Dilution Ratio | WB 1:500 - 1:2000. IHC-p: 1:100-300 ELISA: 1:20000.. |
| Molecular Weight | 32kD |

Product Name: RRP7A Rabbit Polyclonal Antibody
Catalog #: APRab17390

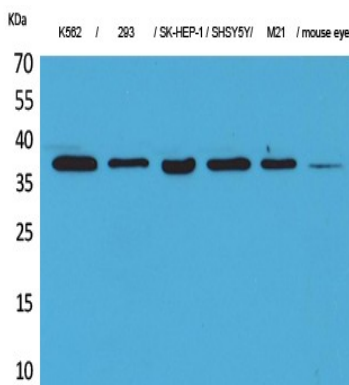


Background

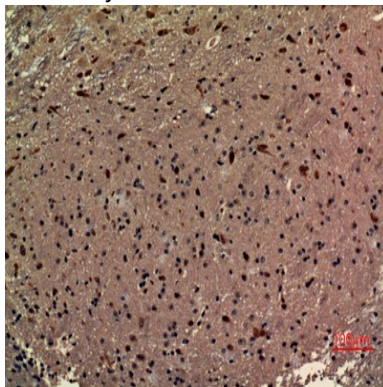
caution:Could be the product of a pseudogene.,similarity:Belongs to the RRP7 family.,similarity:Contains 1 RRM (RNA recognition motif) domain.,caution:Could be the product of a pseudogene.,similarity:Belongs to the RRP7 family.,similarity:Contains 1 RRM (RNA recognition motif) domain.,

Research Area

Image Data



Western Blot analysis of K562, 293, SK-HEP-1, SHSY5Y, M21, mouse eye cells using RRP7A Polyclonal Antibody.. Secondary antibody was diluted at 1:20000



Immunohistochemical analysis of paraffin-embedded mouse-brain, antibody was diluted at 1:100

Note

For research use only.