

## Summary

<b>Production Name</b>	RNF130 Rabbit Polyclonal Antibody
<b>Description</b>	Rabbit Polyclonal Antibody
<b>Host</b>	Rabbit
<b>Application</b>	WB,ELISA
<b>Reactivity</b>	Human,Mouse,Rat

## Performance

<b>Conjugation</b>	Unconjugated
<b>Modification</b>	Unmodified
<b>Isotype</b>	IgG
<b>Clonality</b>	Polyclonal
<b>Form</b>	Liquid
<b>Storage</b>	Store at 4°C short term. Aliquot and store at -20°C long term. Avoid freeze/thaw cycles.
<b>Buffer</b>	Liquid in PBS containing 50% glycerol, 0.5% BSA and 0.02% New type preservative N.
<b>Purification</b>	Affinity purification

## Immunogen

<b>Gene Name</b>	RNF130
<b>Alternative Names</b>	RNF130; E3 ubiquitin-protein ligase RNF130; Goliath homolog; H-Goliath; RING finger protein 130
<b>Gene ID</b>	55819.0
<b>SwissProt ID</b>	Q86XS8.The antiserum was produced against synthesized peptide derived from human RNF130. AA range:231-280

## Application

<b>Dilution Ratio</b>	WB 1:500-2000 ELISA 2000-20000
<b>Molecular Weight</b>	36kD

**Product Name: RNF130 Rabbit Polyclonal Antibody**  
**Catalog #: APRab17286**

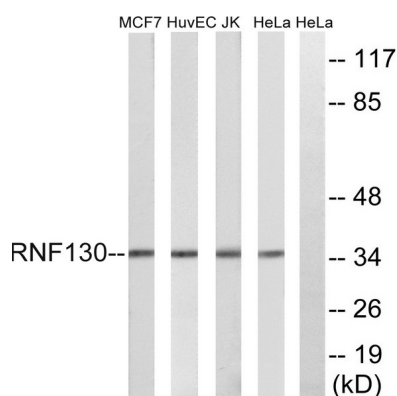


## Background

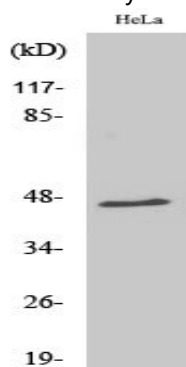
ring finger protein 130(RNF130) Homo sapiens The protein encoded by this gene contains a RING finger motif and is similar to g1, a Drosophila zinc-finger protein that is expressed in mesoderm and involved in embryonic development. The expression of the mouse counterpart was found to be upregulated in myeloblastic cells following IL3 deprivation, suggesting that this gene may regulate growth factor withdrawal-induced apoptosis of myeloid precursor cells. Alternative splicing results in multiple transcript variants. [provided by RefSeq, Jul 2013],function:May have a role during the programmed cell death of hematopoietic cells.,similarity:Contains 1 PA (protease associated) domain.,similarity:Contains 1 RING-type zinc finger.,

## Research Area

## Image Data



Western blot analysis of lysates from HeLa, Jurkat, HUVEC, and MCF-7 cells, using RNF130 Antibody. The lane on the right is blocked with the synthesized peptide.



Western Blot analysis of various cells using RNF130 Polyclonal Antibody diluted at 1: 1000

## Note

For research use only.

**Product Name: RNF130 Rabbit Polyclonal Antibody**  
**Catalog #: APRab17286**

---

