

Summary

Production Name	RhoGEF p115 Rabbit Polyclonal Antibody
Description	Rabbit Polyclonal Antibody
Host	Rabbit
Application	WB,ELISA
Reactivity	Human,Mouse,Rat

Performance

Conjugation	Unconjugated
Modification	Unmodified
Isotype	IgG
Clonality	Polyclonal
Form	Liquid
Storage	Store at 4°C short term. Aliquot and store at -20°C long term. Avoid freeze/thaw cycles.
Buffer	Liquid in PBS containing 50% glycerol, 0.5% BSA and 0.02% New type preservative N.
Purification	Affinity purification

Immunogen

Gene Name	ARHGEF1
Alternative Names	ARHGEF1; Rho guanine nucleotide exchange factor 1; 115 kDa guanine nucleotide exchange factor; p115-RhoGEF; p115RhoGEF; Sub1.5
Gene ID	9138.0
SwissProt ID	Q92888.The antiserum was produced against synthesized peptide derived from human ARHGEF1. AA range:162-211

Application

Dilution Ratio	WB 1:500-2000 ELISA 2000-20000
Molecular Weight	105kD

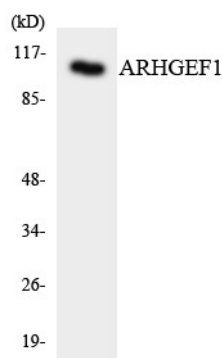
Background

Rho GTPases play a fundamental role in numerous cellular processes that are initiated by extracellular stimuli that work through G protein coupled receptors. The encoded protein may form complex with G proteins and stimulate Rho-dependent signals. Multiple alternatively spliced transcript variants have been found for this gene, but the full-length nature of some variants has not been defined. [provided by RefSeq, Jul 2008],domain:The DH domain is involved in interaction with CCGP1.,domain:The RGSL domain, also known as rgRGS domain, is necessary but not sufficient for GAP activity.,function:Seems to play a role in the regulation of RhoA GTPase by guanine nucleotide-binding alpha-12 (GNA12) and alpha-13 (GNA13) subunits. Acts as GTPase-activating protein (GAP) for GNA12 and GNA13, and as guanine nucleotide exchange factor (GEF) for RhoA GTPase. Activated G alpha 13/GNA13 stimulates the RhoGEF activity through interaction with the RGS-like domain. This GEF activity is inhibited by binding to activated GNA12.,PTM:Phosphorylated by PKCA.,sequence caution:Contaminating sequence. Sequence of unknown origin in the N-terminal part.,similarity:Contains 1 DH (DBL-homology) domain.,similarity:Contains 1 PH domain.,similarity:Contains 1 RGSL (RGS-like) domain.,subcellular location:Translocated to the membrane by activated GNA13 or LPA stimulation.,subunit:Interacts with RHOA, GNA12 and GNA13. Homooligomerizes through the coiled coil region. May interact with CCGP1 (By similarity). Interacts with CTNNAL1.,tissue specificity:Ubiquitously expressed.,

Research Area

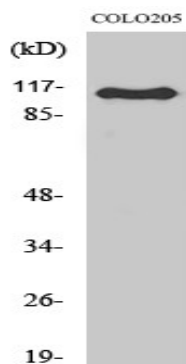
Regulation of Actin Dynamics; AMPK

Image Data



Western blot analysis of the lysates from HepG2 cells using ARHGEF1 antibody.

Product Name: RhoGEF p115 Rabbit Polyclonal Antibody
Catalog #: APRab17133



Western Blot analysis of various cells using RhoGEF p115 Polyclonal Antibody

Note

For research use only.