
Summary

Production Name	Rho B Rabbit Polyclonal Antibody
Description	Rabbit Polyclonal Antibody
Host	Rabbit
Application	WB,ELISA
Reactivity	Human,Mouse,Rat

Performance

Conjugation	Unconjugated
Modification	Unmodified
Isotype	IgG
Clonality	Polyclonal
Form	Liquid
Storage	Store at 4°C short term. Aliquot and store at -20°C long term. Avoid freeze/thaw cycles.
Buffer	Liquid in PBS containing 50% glycerol, 0.5% BSA and 0.02% New type preservative N.
Purification	Affinity purification

Immunogen

Gene Name	RHOB
Alternative Names	RHOB; ARH6; ARHB; Rho-related GTP-binding protein RhoB; Rho cDNA clone 6; h6
Gene ID	388.0
SwissProt ID	P62745.The antiserum was produced against synthesized peptide derived from human RHOB. AA range:99-148

Application

Dilution Ratio	WB 1:500-2000 ELISA 2000-20000
Molecular Weight	22kD

Background

Product Name: Rho B Rabbit Polyclonal Antibody
Catalog #: APRab17121

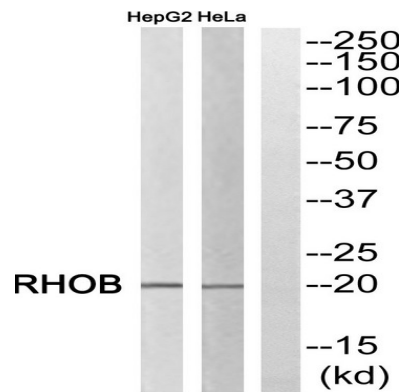


function:Mediates apoptosis in neoplastically transformed cells after DNA damage. Not essential for development but affects cell adhesion and growth factor signaling in transformed cells. Plays a negative role in tumorigenesis as deletion causes tumor formation. Involved in intracellular protein trafficking of a number of proteins. Targets PKN1 to endosomes and is involved in trafficking of the EGF receptor from late endosomes to lysosomes. Also required for stability and nuclear trafficking of AKT1/AKT which promotes endothelial cell survival during vascular development.,miscellaneous:RHOB is one of the targets of farnesyltransferase inhibitors which are currently under investigation as cancer therapeutics. These elevate the levels of geranylgeranylated RHOB and cause mislocalization, leading to apoptosis and antineoplastic effects.,PTM:Prenylation specifies the subcellular location of RHOB. The farnesylated form is localized to the plasma membrane while the geranylgeranylated form is localized to the endosome.,similarity:Belongs to the small GTPase superfamily. Rho family.,subcellular location:Late endosomal membrane (geranylgeranylated form). Plasma membrane (farnesylated form). Also detected at the nuclear margin and in the nucleus.,subunit:Binds ROCK1 and ROCK2. Also binds PKN1/PRK1. Interacts with ARGGEF3, RTKN and AKAP13.,function:Mediates apoptosis in neoplastically transformed cells after DNA damage. Not essential for development but affects cell adhesion and growth factor signaling in transformed cells. Plays a negative role in tumorigenesis as deletion causes tumor formation. Involved in intracellular protein trafficking of a number of proteins. Targets PKN1 to endosomes and is involved in trafficking of the EGF receptor from late endosomes to lysosomes. Also required for stability and nuclear trafficking of AKT1/AKT which promotes endothelial cell survival during vascular development.,miscellaneous:RHOB is one of the targets of farnesyltransferase inhibitors which are currently under investigation as cancer therapeutics. These elevate the levels of geranylgeranylated RHOB and cause mislocalization, leading to apoptosis and antineoplastic effects.,PTM:Prenylation specifies the subcellular location of RHOB. The farnesylated form is localized to the plasma membrane while the geranylgeranylated form is localized to the endosome.,similarity:Belongs to the small GTPase superfamily. Rho family.,subcellular location:Late endosomal membrane (geranylgeranylated form). Plasma membrane (farnesylated form). Also detected at the nuclear margin and in the nucleus.,subunit:Binds ROCK1 and ROCK2. Also binds PKN1/PRK1. Interacts with ARGGEF3, RTKN and AKAP13.,

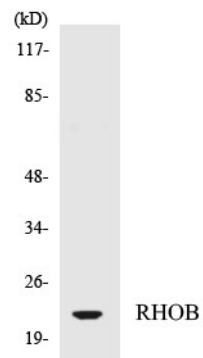
Research Area

Image Data

Product Name: Rho B Rabbit Polyclonal Antibody
Catalog #: APRab17121



Western blot analysis of RHOB Antibody. The lane on the right is blocked with the RHOB peptide.



Western blot analysis of the lysates from HepG2 cells using RHOB antibody.

Note

For research use only.