
Summary

Production Name	RAGE Rabbit Polyclonal Antibody
Description	Rabbit Polyclonal Antibody
Host	Rabbit
Application	IHC, WB, ELISA
Reactivity	Human, Rat, Mouse

Performance

Conjugation	Unconjugated
Modification	Unmodified
Isotype	IgG
Clonality	Polyclonal
Form	Liquid
Storage	Store at 4°C short term. Aliquot and store at -20°C long term. Avoid freeze/thaw cycles.
Buffer	Liquid in PBS containing 50% glycerol, 0.5% BSA and 0.02% New type preservative N.
Purification	Affinity purification

Immunogen

Gene Name	MOK
Alternative Names	MOK; RAGE; RAGE1; MAPK/MAK/MRK overlapping kinase; MOK protein kinase; Renal tumor antigen 1; RAGE-1
Gene ID	5891.0
SwissProt ID	Q9UQ07. The antiserum was produced against synthesized peptide derived from human MOK. AA range:261-310

Application

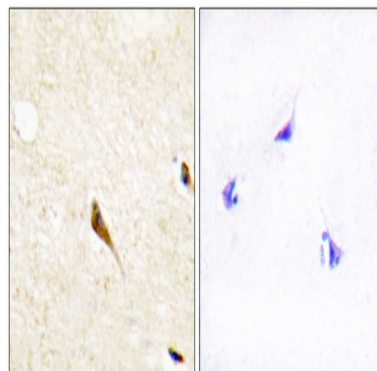
Dilution Ratio	WB 1:500 - 1:2000. IHC 1:100 - 1:300. . ELISA: 1:5000. Not yet tested in other applications.
Molecular Weight	48kD

Background

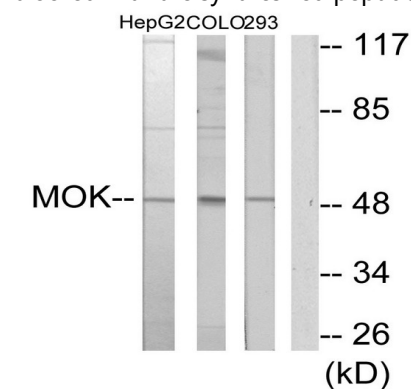
MOK protein kinase(MOK) Homo sapiens This gene belongs to the MAP kinase superfamily. The gene was found to be regulated by caudal type transcription factor 2 (Cdx2) protein. The encoded protein, which is localized to epithelial cells in the intestinal crypt, may play a role in growth arrest and differentiation of cells of upper crypt and lower villus regions. Multiple alternatively spliced transcript variants encoding different isoforms have been observed for this gene. [provided by RefSeq, Dec 2012],catalytic activity:ATP + a protein = ADP + a phosphoprotein.,enzyme regulation:Phosphorylation appears to increase the enzymatic activity.,function:Able to phosphorylate several exogenous substrates and to undergo autophosphorylation.,PTM:Autophosphorylated.,similarity:Belongs to the protein kinase superfamily. CMGC Ser/Thr protein kinase family. CDC2/CDKX subfamily.,similarity:Contains 1 protein kinase domain.,tissue specificity:Expressed in heart, brain, lung, kidney, and pancreas, and at very low levels in placenta, liver and skeletal muscle. Detected in retina.,

Research Area

Image Data



Immunohistochemistry analysis of paraffin-embedded human brain tissue, using MOK Antibody. The picture on the right is blocked with the synthesized peptide.

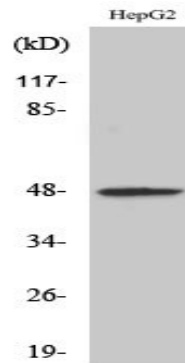


Western blot analysis of lysates from HepG2, COLO205, and 293 cells, using MOK Antibody. The lane on the right is blocked

Product Name: RAGE Rabbit Polyclonal Antibody
Catalog #: APRab16863



with the synthesized peptide.



Western Blot analysis of various cells using RAGE Polyclonal Antibody

Note

For research use only.