

Summary

Production Name	PSK2 Rabbit Polyclonal Antibody
Description	Rabbit Polyclonal Antibody
Host	Rabbit
Application	WB,IHC,ELISA
Reactivity	Human,Mouse,Rat

Performance

Conjugation	Unconjugated
Modification	Unmodified
Isotype	IgG
Clonality	Polyclonal
Form	Liquid
Storage	Store at 4°C short term. Aliquot and store at -20°C long term. Avoid freeze/thaw cycles.
Buffer	Liquid in PBS containing 50% glycerol, 0.5% BSA and 0.02% New type preservative N.
Purification	Affinity purification

Immunogen

Gene Name	TAOK1 TAOK1; KIAA1361; MAP3K16; MARKK; Serine/threonine-protein kinase TAO1; Kinase from chicken homolog B; hKFC-B; MARK Kinase; MARKK; Prostate-derived sterile 20-like kinase 2; PSK-2; PSK2; Prostate-derived STE20-like kinase 2; Thousand and one
Alternative Names	
Gene ID	57551.0
SwissProt ID	Q7L7X3.The antiserum was produced against synthesized peptide derived from human TAOK1. AA range:431-480

Application

Dilution Ratio	WB 1:500 - 1:2000. IHC 1:100 - 1:300. ELISA: 1:5000..
Molecular Weight	120kD

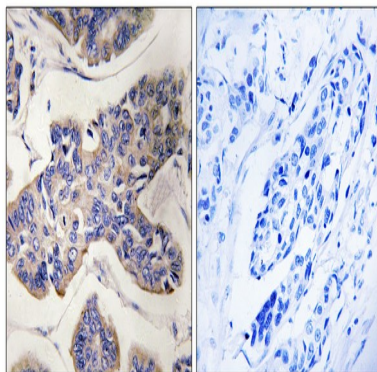
Background

catalytic activity:ATP + a protein = ADP + a phosphoprotein.,function:Phosphorylates MKK3 (By similarity). Activates the p38 MAP kinase pathway through the specific activation of the upstream MKK3 kinase.,PTM:Autophosphorylated.,similarity:Belongs to the protein kinase superfamily. STE Ser/Thr protein kinase family. STE20 subfamily.,similarity:Contains 1 protein kinase domain.,subunit:Self-associates. Interacts with MKK3.,tissue specificity:Highly expressed in the testis, and to a lower extent also expressed in brain, placenta, colon and skeletal muscle.,catalytic activity:ATP + a protein = ADP + a phosphoprotein.,function:Phosphorylates MKK3 (By similarity). Activates the p38 MAP kinase pathway through the specific activation of the upstream MKK3 kinase.,PTM:Autophosphorylated.,similarity:Belongs to the protein kinase superfamily. STE Ser/Thr protein kinase family. STE20 subfamily.,similarity:Contains 1 protein kinase domain.,subunit:Self-associates. Interacts with MKK3.,tissue specificity:Highly expressed in the testis, and to a lower extent also expressed in brain, placenta, colon and skeletal muscle.,

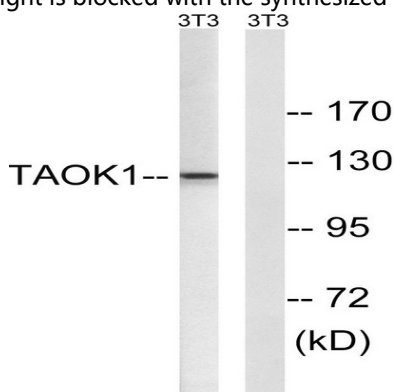
Research Area

MAPK_ERK_Growth;MAPK_G_Protein;

Image Data



Immunohistochemistry analysis of paraffin-embedded human breast carcinoma tissue, using TAOK1 Antibody. The picture on the right is blocked with the synthesized peptide.



Product Name: PSK2 Rabbit Polyclonal Antibody
Catalog #: APRab16603



Western blot analysis of lysates from NIH/3T3 cells, using TAOK1 Antibody. The lane on the right is blocked with the synthesized peptide.

Note

For research use only.