

Product Name: Olfactory receptor 2AG1/2 Rabbit Polyclonal Antibody
Catalog #: APRab15178

Summary

Production Name	Olfactory receptor 2AG1/2 Rabbit Polyclonal Antibody
Description	Rabbit Polyclonal Antibody
Host	Rabbit
Application	IF, WB,
Reactivity	Human, Rat, Mouse

Performance

Conjugation	Unconjugated
Modification	Unmodified
Isotype	IgG
Clonality	Polyclonal
Form	Liquid
Storage	Store at 4°C short term. Aliquot and store at -20°C long term. Avoid freeze/thaw cycles.
Buffer	Liquid in PBS containing 50% glycerol, 0.5% BSA and 0.02% New type preservative N.
Purification	Affinity purification

Immunogen

Gene Name	OR2AG1/OR2AG2
Alternative Names	OR2AG1; OR2AG3; Olfactory receptor 2AG1; HT3; Olfactory receptor 2AG3; Olfactory receptor OR11-79; OR2AG2; OR2AG2P; Olfactory receptor 2AG2
Gene ID	144125/338755
SwissProt ID	Q9H205/A6NM03. The antiserum was produced against synthesized peptide derived from human OR2AG1/2AG2. AA range:61-110

Application

Dilution Ratio	WB 1:500 - 1:2000. IF 1:200 - 1:1000. ELISA: 1:10000. Not yet tested in other applications.
-----------------------	---

**Product Name: Olfactory receptor 2AG1/2 Rabbit
Polyclonal Antibody
Catalog #: APRab15178**

Molecular Weight 35kD

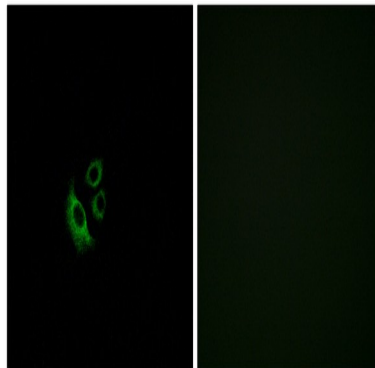
Background

Olfactory receptors interact with odorant molecules in the nose, to initiate a neuronal response that triggers the perception of a smell. The olfactory receptor proteins are members of a large family of G-protein-coupled receptors (GPCR) arising from single coding-exon genes. Olfactory receptors share a 7-transmembrane domain structure with many neurotransmitter and hormone receptors and are responsible for the recognition and G protein-mediated transduction of odorant signals. The olfactory receptor gene family is the largest in the genome. The nomenclature assigned to the olfactory receptor genes and proteins for this organism is independent of other organisms. This olfactory receptor gene is a segregating pseudogene, where some individuals have an allele that encodes a functional olfactory receptor, while other individuals have an allele encoding a function:Odorant receptor .,similarity:Belongs to the G-protein coupled receptor 1 family,.

Research Area

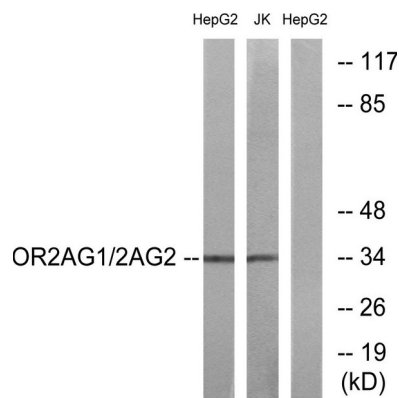
Olfactory transduction;

Image Data

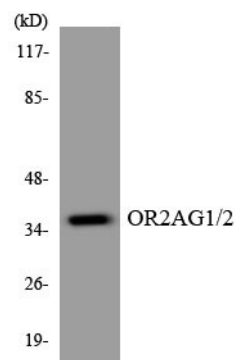


Immunofluorescence analysis of A549 cells, using OR2AG1/2AG2 Antibody. The picture on the right is blocked with the synthesized peptide.

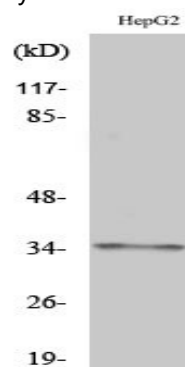
Product Name: Olfactory receptor 2AG1/2 Rabbit Polyclonal Antibody
Catalog #: APRab15178



Western blot analysis of lysates from HepG2 and Jurkat cells, using OR2AG1/2 Antibody. The lane on the right is blocked with the synthesized peptide.



Western blot analysis of the lysates from HT-29 cells using OR2AG1/2 antibody.



Western Blot analysis of various cells using Olfactory receptor 2AG1/2 Polyclonal Antibody

Note

For research use only.