

**Product Name: Olfactory receptor 1L6 Rabbit Polyclonal Antibody**  
**Catalog #: APRab15169**

---

## Summary

<b>Production Name</b>	Olfactory receptor 1L6 Rabbit Polyclonal Antibody
<b>Description</b>	Rabbit Polyclonal Antibody
<b>Host</b>	Rabbit
<b>Application</b>	IF, WB,
<b>Reactivity</b>	Human, Rat, Mouse

## Performance

<b>Conjugation</b>	Unconjugated
<b>Modification</b>	Unmodified
<b>Isotype</b>	IgG
<b>Clonality</b>	Polyclonal
<b>Form</b>	Liquid
<b>Storage</b>	Store at 4°C short term. Aliquot and store at -20°C long term. Avoid freeze/thaw cycles.
<b>Buffer</b>	Liquid in PBS containing 50% glycerol, 0.5% BSA and 0.02% New type preservative N.
<b>Purification</b>	Affinity purification

## Immunogen

<b>Gene Name</b>	OR1L6
<b>Alternative Names</b>	OR1L6; OR1L7; Olfactory receptor 1L6; Olfactory receptor 1L7; Olfactory receptor OR9-30
<b>Gene ID</b>	392390.0
<b>SwissProt ID</b>	Q8NGR2. The antiserum was produced against synthesized peptide derived from human OR1L6. AA range:111-160

## Application

<b>Dilution Ratio</b>	WB 1:500 - 1:2000. IF 1:200 - 1:1000. ELISA: 1:20000. Not yet tested in other applications.
-----------------------	---

**Product Name: Olfactory receptor 1L6 Rabbit Polyclonal Antibody**  
**Catalog #: APRab15169**

**Molecular Weight** 34kD

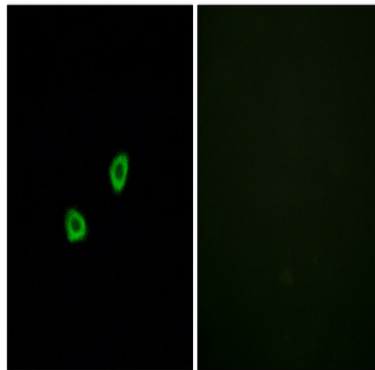
## Background

olfactory receptor family 1 subfamily L member 6(OR1L6) Homo sapiens Olfactory receptors interact with odorant molecules in the nose, to initiate a neuronal response that triggers the perception of a smell. The olfactory receptor proteins are members of a large family of G-protein-coupled receptors (GPCR) arising from single coding-exon genes. Olfactory receptors share a 7-transmembrane domain structure with many neurotransmitter and hormone receptors and are responsible for the recognition and G protein-mediated transduction of odorant signals. The olfactory receptor gene family is the largest in the genome. The nomenclature assigned to the olfactory receptor genes and proteins for this organism is independent of other organisms. [provided by RefSeq, Jul 2008],caution:It is uncertain whether Met-1 or Met-37 is the initiator.,function:Odorant receptor .,similarity:Belongs to the G-protein coupled receptor 1 family.,

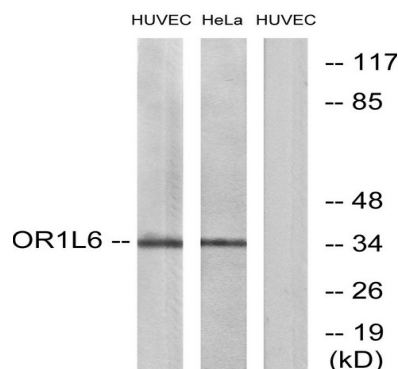
## Research Area

Olfactory transduction;

## Image Data



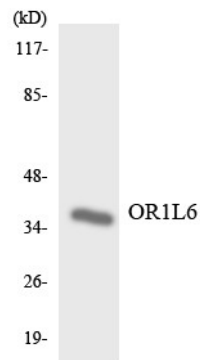
Immunofluorescence analysis of HUVEC cells, using OR1L6 Antibody. The picture on the right is blocked with the synthesized peptide.



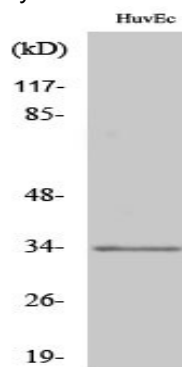
**Product Name: Olfactory receptor 1L6 Rabbit Polyclonal Antibody**  
**Catalog #: APRab15169**



Western blot analysis of lysates from HUVEC and HeLa cells, using OR1L6 Antibody. The lane on the right is blocked with the synthesized peptide.



Western blot analysis of the lysates from COLO205 cells using OR1L6 antibody.



Western Blot analysis of various cells using Olfactory receptor 1L6 Polyclonal Antibody

**Note**

For research use only.