

Product Name: Olfactory receptor 1D4/1D5 Rabbit Polyclonal Antibody
Catalog #: APRab15168



Summary

Production Name	Olfactory receptor 1D4/1D5 Rabbit Polyclonal Antibody
Description	Rabbit Polyclonal Antibody
Host	Rabbit
Application	IF, WB,
Reactivity	Human, Rat, Mouse

Performance

Conjugation	Unconjugated
Modification	Unmodified
Isotype	IgG
Clonality	Polyclonal
Form	Liquid
Storage	Store at 4°C short term. Aliquot and store at -20°C long term. Avoid freeze/thaw cycles.
Buffer	Liquid in PBS containing 50% glycerol, 0.5% BSA and 0.02% New type preservative N.
Purification	Affinity purification

Immunogen

Gene Name	OR1D4/OR1D5
Alternative Names	OR1D5; Olfactory receptor 1D5; Olfactory receptor 17-31; OR17-31; OR1D4; Olfactory receptor 1D4; Olfactory receptor 17-30; OR17-30
Gene ID	8386.0
SwissProt ID	P58170/P47884. The antiserum was produced against synthesized peptide derived from human OR1D4/5. AA range:200-249

Application

Dilution Ratio	WB 1:500 - 1:2000. IF 1:200 - 1:1000. ELISA: 1:20000. Not yet tested in other applications.
-----------------------	---

Product Name: Olfactory receptor 1D4/1D5 Rabbit Polyclonal Antibody
Catalog #: APRab15168



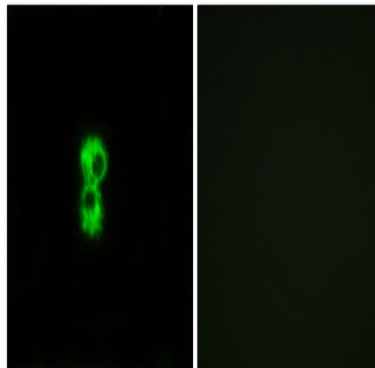
Molecular Weight 38kD

Background

olfactory receptor family 1 subfamily D member 5(OR1D5) Homo sapiens Olfactory receptors interact with odorant molecules in the nose, to initiate a neuronal response that triggers the perception of a smell. The olfactory receptor proteins are members of a large family of G-protein-coupled receptors (GPCR) arising from single coding-exon genes. Olfactory receptors share a 7-transmembrane domain structure with many neurotransmitter and hormone receptors and are responsible for the recognition and G protein-mediated transduction of odorant signals. The olfactory receptor gene family is the largest in the genome. The nomenclature assigned to the olfactory receptor genes and proteins for this organism is independent of other organisms. [provided by RefSeq, Jul 2008],function:Odorant receptor .,miscellaneous:The sequence shown here is derived from an EMBL/GenBank/DDBJ third party annotation (TPA) entry.,similarity:Belongs to the G-protein coupled receptor 1 family.,

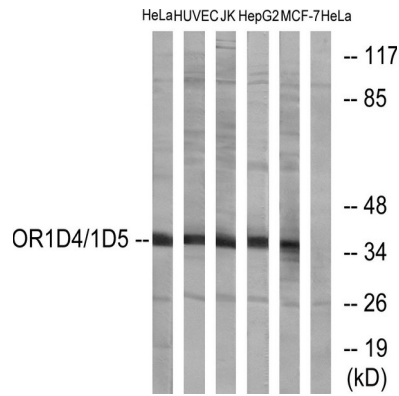
Research Area

Image Data

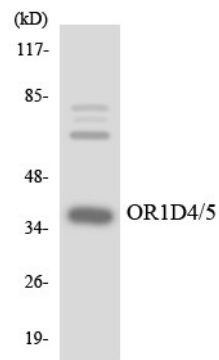


Immunofluorescence analysis of MCF7 cells, using OR1D4/5 Antibody. The picture on the right is blocked with the synthesized peptide.

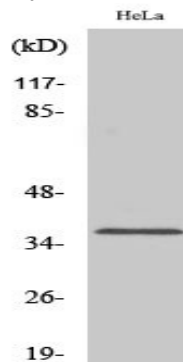
Product Name: Olfactory receptor 1D4/1D5 Rabbit Polyclonal Antibody
Catalog #: APRab15168



Western blot analysis of lysates from HeLa, HUVEC, Jurkat, HepG2, and MCF-7 cells, using OR1D4/5 Antibody. The lane on the right is blocked with the synthesized peptide.



Western blot analysis of the lysates from K562 cells using OR1D4/5 antibody.



Western Blot analysis of various cells using Olfactory receptor 1D4/1D5 Polyclonal Antibody diluted at 1: 2000

Note

For research use only.