

Summary

Production Name	NXF3 Rabbit Polyclonal Antibody
Description	Rabbit Polyclonal Antibody
Host	Rabbit
Application	WB,IHC,ELISA
Reactivity	Human,Rat,Mouse

Performance

Conjugation	Unconjugated
Modification	Unmodified
Isotype	IgG
Clonality	Polyclonal
Form	Liquid
Storage	Store at 4°C short term. Aliquot and store at -20°C long term. Avoid freeze/thaw cycles.
Buffer	Liquid in PBS containing 50% glycerol, 0.5% BSA and 0.02% New type preservative N.
Purification	Affinity purification

Immunogen

Gene Name	NXF3
Alternative Names	NXF3; TAPL3; Nuclear RNA export factor 3; TAP-like protein 3; TAPL-3
Gene ID	56000.0
SwissProt ID	Q9H4D5.The antiserum was produced against synthesized peptide derived from human NXF3. AA range:72-121

Application

Dilution Ratio	WB 1:500 - 1:2000. IHC 1:100 - 1:300. ELISA: 1:40000..
Molecular Weight	60kD

Background

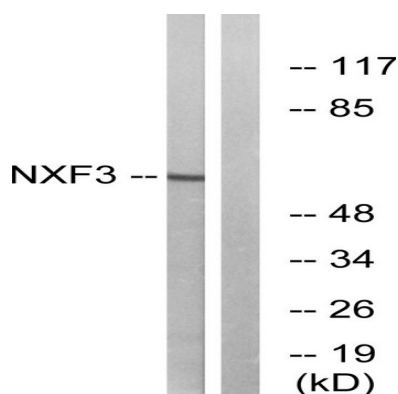
Product Name: NXF3 Rabbit Polyclonal Antibody
Catalog #: APRab14995



This gene is one member of a family of nuclear RNA export factor genes. Common domain features of this family are a noncanonical RNP-type RNA-binding domain (RBD), 4 leucine-rich repeats (LRRs), a nuclear transport factor 2 (NTF2)-like domain that allows heterodimerization with NTF2-related export protein-1 (NXT1), and a ubiquitin-associated domain that mediates interactions with nucleoporins. The LRRs and NTF2-like domains are required for export activity. Alternative splicing seems to be a common mechanism in this gene family. The encoded protein of this gene has shortened LRR and ubiquitin-associated domains and its RDB is unable to bind RNA. It is located in the nucleoplasm but is not associated with either the nuclear envelope or the nucleolus. [provided by RefSeq, Jul 2008],domain:Contains a novel CRM1-dependent nuclear export signal that compensates in cis for the loss of the nuclear pore targeting domain.,domain:Lacks C-terminal domain that mediates direct interactions with nucleoporins.,function:May function as a tissue-specific nuclear mRNA export factor.,miscellaneous:The RNA-binding domain is a non-canonical RNP-type domain.,similarity:Belongs to the NXF family.,similarity:Contains 1 LRR (leucine-rich) repeat.,similarity:Contains 1 NTF2 domain.,similarity:Contains 1 RRM (RNA recognition motif) domain.,subcellular location:Shuttles between the nucleus and the cytoplasm.,subunit:Interacts with NXT1, NXT2, E1B-AP5 and CRM1 nuclear export factor.,tissue specificity:Expressed at high level in testis and at low level in a small number of tissues.,

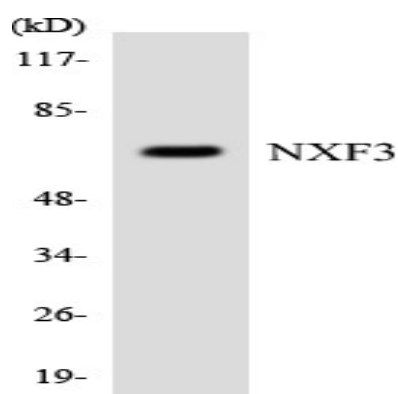
Research Area

Image Data

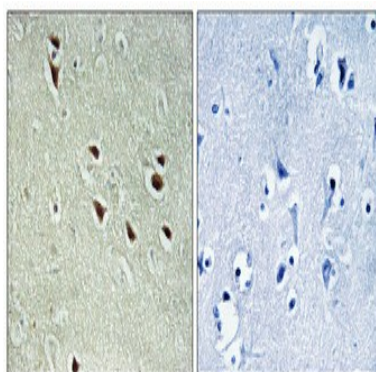


Western blot analysis of lysates from MCF-7 cells, using NXF3 Antibody. The lane on the right is blocked with the synthesized peptide.

Product Name: NXF3 Rabbit Polyclonal Antibody
Catalog #: APRab14995



Western blot analysis of the lysates from HepG2 cells using NXF3 antibody.



Immunohistochemical analysis of paraffin-embedded Human brain. Antibody was diluted at 1:100 (4°, overnight) . High-pressure and temperature Tris-EDTA, pH 8.0 was used for antigen retrieval. Negative control (right) obtained from antibody was pre-absorbed by immunogen peptide.

Note

For research use only.