

## Summary

<b>Production Name</b>	NTPase Rabbit Polyclonal Antibody
<b>Description</b>	Rabbit Polyclonal Antibody
<b>Host</b>	Rabbit
<b>Application</b>	WB,ELISA
<b>Reactivity</b>	Human,Rat,Mouse

## Performance

<b>Conjugation</b>	Unconjugated
<b>Modification</b>	Unmodified
<b>Isotype</b>	IgG
<b>Clonality</b>	Polyclonal
<b>Form</b>	Liquid
<b>Storage</b>	Store at 4°C short term. Aliquot and store at -20°C long term. Avoid freeze/thaw cycles.
<b>Buffer</b>	Liquid in PBS containing 50% glycerol, 0.5% BSA and 0.02% New type preservative N.
<b>Purification</b>	Affinity purification

## Immunogen

<b>Gene Name</b>	NTPCR
<b>Alternative Names</b>	NTPCR; C1orf57; Cancer-related nucleoside-triphosphatase; NTPase; Nucleoside triphosphate phosphohydrolase
<b>Gene ID</b>	84284.0
<b>SwissProt ID</b>	Q9BSD7.The antiserum was produced against synthesized peptide derived from human C1orf57. AA range:141-190

## Application

<b>Dilution Ratio</b>	WB 1:500 - 1:2000. ELISA: 1:40000..
<b>Molecular Weight</b>	21kD

**Product Name: NTPase Rabbit Polyclonal Antibody**  
**Catalog #: APRab14931**

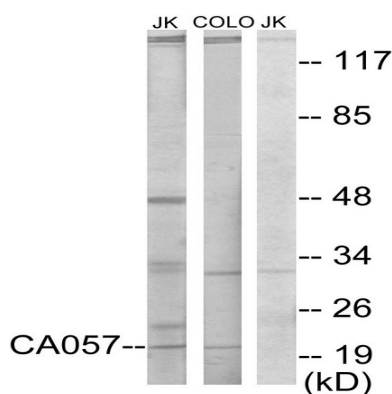


## Background

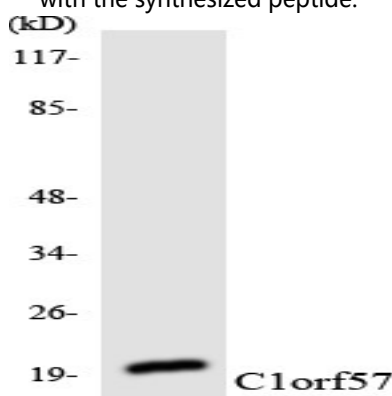
The protein encoded by this gene is a non-specific nucleoside triphosphatase that is slow-acting in vitro. This gene is overexpressed in many tumor tissues, and while it is not essential for the cell, overexpression is cytotoxic. However, the cytotoxicity is not related to its triphosphatase activity. [provided by RefSeq, Jul 2016], catalytic activity: NTP + H<sub>2</sub>O = NDP + phosphate., function: Has nucleotide phosphatase activity towards ATP, GTP, CTP, TTP and UTP. Hydrolyzes nucleoside diphosphates with lower efficiency., similarity: Belongs to the THEP1 NTPase family., subunit: Monomer.,

## Research Area

## Image Data

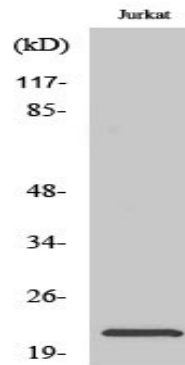


Western blot analysis of lysates from Jurkat and COLO205 cells, using C1orf57 Antibody. The lane on the right is blocked with the synthesized peptide.



Western blot analysis of the lysates from HUVEC cells using C1orf57 antibody.

**Product Name: NTPase Rabbit Polyclonal Antibody**  
**Catalog #: APRab14931**



Western Blot analysis of various cells using NTPase Polyclonal Antibody

**Note**

For research use only.