
Summary

Production Name	NOL10 Rabbit Polyclonal Antibody
Description	Rabbit Polyclonal Antibody
Host	Rabbit
Application	WB,IHC,ELISA
Reactivity	Human,Rat,Mouse

Performance

Conjugation	Unconjugated
Modification	Unmodified
Isotype	IgG
Clonality	Polyclonal
Form	Liquid
Storage	Store at 4°C short term. Aliquot and store at -20°C long term. Avoid freeze/thaw cycles.
Buffer	Liquid in PBS containing 50% glycerol, 0.5% BSA and 0.02% New type preservative N.
Purification	Affinity purification

Immunogen

Gene Name	NOL10
Alternative Names	NOL10; Nucleolar protein 10
Gene ID	79954.0
SwissProt ID	Q9BSC4.The antiserum was produced against synthesized peptide derived from human NOL10. AA range:639-688

Application

Dilution Ratio	WB 1:500 - 1:2000. IHC 1:100 - 1:300. ELISA: 1:40000..
Molecular Weight	80kD

Background

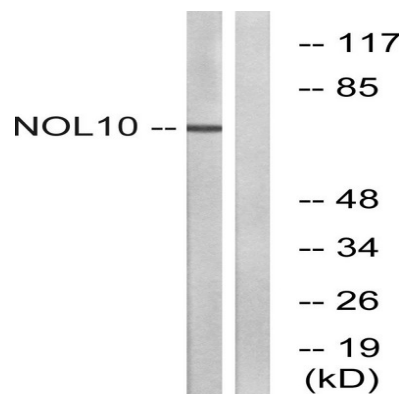
Product Name: NOL10 Rabbit Polyclonal Antibody
Catalog #: APRab14786



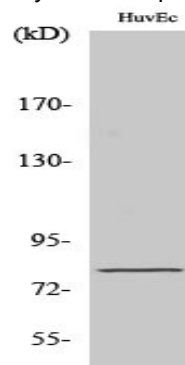
similarity:Belongs to the WD repeat NOL10/ENP2 family.,similarity:Contains 5 WD repeats.,similarity:Belongs to the WD repeat NOL10/ENP2 family.,similarity:Contains 5 WD repeats.,

Research Area

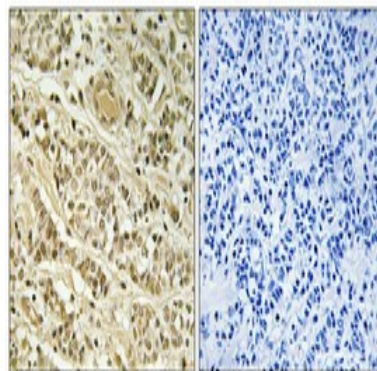
Image Data



Western blot analysis of lysates from HUVEC cells, using NOL10 Antibody. The lane on the right is blocked with the synthesized peptide.



Western Blot analysis of various cells using NOL10 Polyclonal Antibody cells nucleus extracted by Minute TM Cytoplasmic and Nuclear Fractionation kit (SC-003, Inventbiotech, MN, USA) .



Product Name: NOL10 Rabbit Polyclonal Antibody
Catalog #: APRab14786



Immunohistochemical analysis of paraffin-embedded Human breast cancer. Antibody was diluted at 1:100 (4°,overnight) .
High-pressure and temperature Tris-EDTA,pH8.0 was used for antigen retrieval. Negetive contrl (right) obtaned from
antibody was pre-absorbed by immunogen peptide.

Note

For research use only.