

Summary

Production Name	NOC2L Rabbit Polyclonal Antibody
Description	Rabbit Polyclonal Antibody
Host	Rabbit
Application	WB,IHC,ELISA
Reactivity	Human,Mouse,Rat

Performance

Conjugation	Unconjugated
Modification	Unmodified
Isotype	IgG
Clonality	Polyclonal
Form	Liquid
Storage	Store at 4°C short term. Aliquot and store at -20°C long term. Avoid freeze/thaw cycles.
Buffer	Liquid in PBS containing 50% glycerol, 0.5% BSA and 0.02% New type preservative N.
Purification	Affinity purification

Immunogen

Gene Name	NOC2L
Alternative Names	NOC2L; NIR; Nucleolar complex protein 2 homolog; Protein NOC2 homolog; NOC2-like protein; Novel INHAT repressor
Gene ID	26155.0
SwissProt ID	Q9Y3T9.The antiserum was produced against synthesized peptide derived from human NOC2L. AA range:602-651

Application

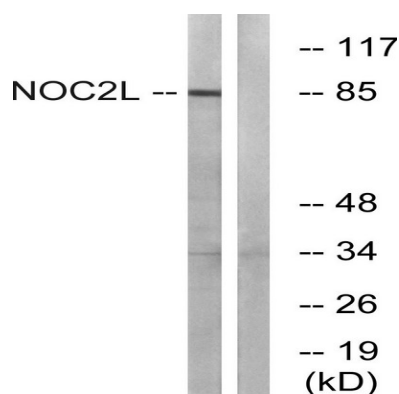
Dilution Ratio	WB 1:500 - 1:2000. IHC 1:100 - 1:300. ELISA: 1:40000..
Molecular Weight	85kD

Background

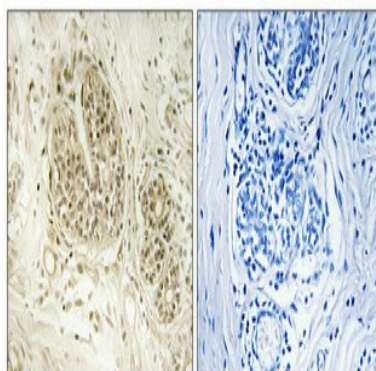
NOC2 like nucleolar associated transcriptional repressor(NOC2L) Homo sapiens Histone modification by histone acetyltransferases (HAT) and histone deacetylases (HDAC) can control major aspects of transcriptional regulation. NOC2L represents a novel HDAC-independent inhibitor of histone acetyltransferase (INHAT) (Hublitz et al., 2005 [PubMed 16322561]).[supplied by OMIM, Mar 2008],similarity:Belongs to the NOC2 family.,

Research Area

Image Data



Western blot analysis of lysates from MCF-7 cells, using NOC2L Antibody. The lane on the right is blocked with the synthesized peptide.



Immunohistochemical analysis of paraffin-embedded Human breast cancer. Antibody was diluted at 1:100 (4°,overnight) . High-pressure and temperature Tris-EDTA,pH8.0 was used for antigen retrieval. Negative contrl (right) obtained from antibody was pre-absorbed by immunogen peptide.

Note

For research use only.