

Product Name: Neurexophilin-1 Rabbit Polyclonal Antibody
Catalog #: APRab14598

Summary

Production Name	Neurexophilin-1 Rabbit Polyclonal Antibody
Description	Rabbit Polyclonal Antibody
Host	Rabbit
Application	WB,IHC,ELISA
Reactivity	Human,Mouse,Rat

Performance

Conjugation	Unconjugated
Modification	Unmodified
Isotype	IgG
Clonality	Polyclonal
Form	Liquid
Storage	Store at 4°C short term. Aliquot and store at -20°C long term. Avoid freeze/thaw cycles.
Buffer	Liquid in PBS containing 50% glycerol, 0.5% BSA and 0.02% New type preservative N.
Purification	Affinity purification

Immunogen

Gene Name	NXPH1
Alternative Names	NXPH1; NPH1; Nbla00697; Neurexophilin-1
Gene ID	30010.0
SwissProt ID	P58417.The antiserum was produced against synthesized peptide derived from human NXPH1. AA range:77-126

Application

Dilution Ratio	WB 1:500 - 1:2000. IHC 1:100 - 1:300. ELISA: 1:20000..
Molecular Weight	31kD

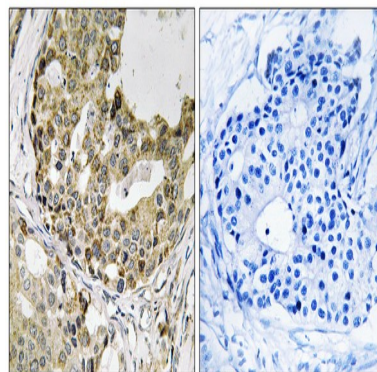
Product Name: Neurexophilin-1 Rabbit Polyclonal Antibody
Catalog #: APRab14598

Background

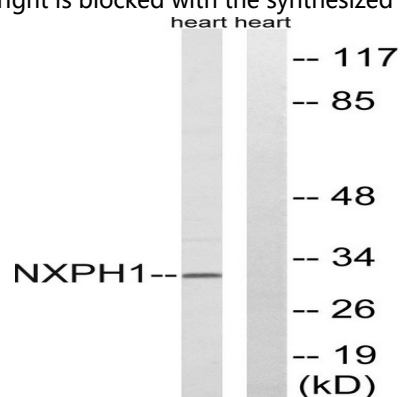
This gene is a member of the neurexophilin family and encodes a secreted protein with a variable N-terminal domain, a highly conserved, N-glycosylated central domain, a short linker region, and a cysteine-rich C-terminal domain. This protein forms a very tight complex with alpha neurexins, a group of proteins that promote adhesion between dendrites and axons. [provided by RefSeq, Jul 2008],function:May be signaling molecules that resemble neuropeptides and that act by binding to alpha-neurexins and possibly other receptors .,similarity:Belongs to the neurexophilin family.,

Research Area

Image Data



Immunohistochemistry analysis of paraffin-embedded human breast carcinoma tissue, using NXPH1 Antibody. The picture on the right is blocked with the synthesized peptide.



Western blot analysis of lysates from rat heart cells, using NXPH1 Antibody. The lane on the right is blocked with the synthesized peptide.

Note

For research use only.

**Product Name: Neurexophilin-1 Rabbit Polyclonal
Antibody**
Catalog #: APRab14598

