

## Summary

<b>Production Name</b>	NDUFA3 Rabbit Polyclonal Antibody
<b>Description</b>	Rabbit Polyclonal Antibody
<b>Host</b>	Rabbit
<b>Application</b>	IHC,ELISA
<b>Reactivity</b>	Human,Mouse

## Performance

<b>Conjugation</b>	Unconjugated
<b>Modification</b>	Unmodified
<b>Isotype</b>	IgG
<b>Clonality</b>	Polyclonal
<b>Form</b>	Liquid
<b>Storage</b>	Store at 4°C short term. Aliquot and store at -20°C long term. Avoid freeze/thaw cycles.
<b>Buffer</b>	Liquid in PBS containing 50% glycerol, 0.5% BSA and 0.02% New type preservative N.
<b>Purification</b>	Affinity purification

## Immunogen

<b>Gene Name</b>	NDUFA3
<b>Alternative Names</b>	NDUFA3; NADH dehydrogenase [ubiquinone] 1 alpha subcomplex subunit 3; Complex I-B9; CI-B9; NADH-ubiquinone oxidoreductase B9 subunit
<b>Gene ID</b>	4696.0
<b>SwissProt ID</b>	O95167.The antiserum was produced against synthesized peptide derived from human NDUFA3. AA range:34-83

## Application

<b>Dilution Ratio</b>	IHC 1:100 - 1:300. ELISA: 1:40000..
<b>Molecular Weight</b>	

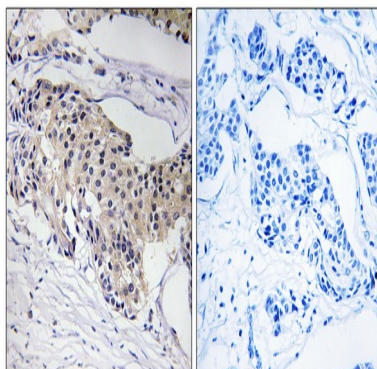
## Background

function:Accessory subunit of the mitochondrial membrane respiratory chain NADH dehydrogenase (Complex I), that is believed to be not involved in catalysis. Complex I functions in the transfer of electrons from NADH to the respiratory chain. The immediate electron acceptor for the enzyme is believed to be ubiquinone.,similarity:Belongs to the complex I NDUFA3 subunit family.,subunit:Complex I is composed of 45 different subunits.,function:Accessory subunit of the mitochondrial membrane respiratory chain NADH dehydrogenase (Complex I), that is believed to be not involved in catalysis. Complex I functions in the transfer of electrons from NADH to the respiratory chain. The immediate electron acceptor for the enzyme is believed to be ubiquinone.,similarity:Belongs to the complex I NDUFA3 subunit family.,subunit:Complex I is composed of 45 different subunits.,

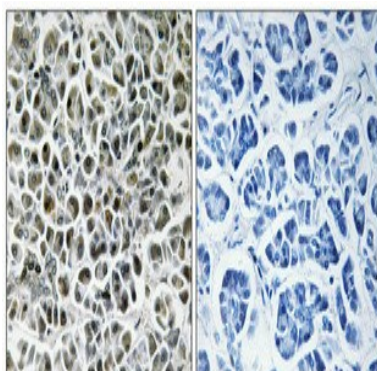
## Research Area

Oxidative phosphorylation;Alzheimer's disease;Parkinson's disease;Huntington's disease;

## Image Data



Immunohistochemistry analysis of paraffin-embedded human breast carcinoma tissue, using NDUFA3 Antibody. The picture on the right is blocked with the synthesized peptide.



Immunohistochemical analysis of paraffin-embedded Human pancreas. Antibody was diluted at 1:100 (4°,overnight) . High-pressure and temperature Tris-EDTA,pH8.0 was used for antigen retrieval. Negative contrl (right) obtained from antibody was pre-absorbed by immunogen peptide.

**Product Name: NDUFA3 Rabbit Polyclonal Antibody**  
**Catalog #: APRab14497**

---



**Note**

For research use only.