

Summary

Production Name	NDRG3 Rabbit Polyclonal Antibody
Description	Rabbit Polyclonal Antibody
Host	Rabbit
Application	WB,IHC,ELISA
Reactivity	Human,Mouse,Rat

Performance

Conjugation	Unconjugated
Modification	Unmodified
Isotype	IgG
Clonality	Polyclonal
Form	Liquid
Storage	Store at 4°C short term. Aliquot and store at -20°C long term. Avoid freeze/thaw cycles.
Buffer	Liquid in PBS containing 50% glycerol, 0.5% BSA and 0.02% New type preservative N.
Purification	Affinity purification

Immunogen

Gene Name	NDRG3
Alternative Names	NDRG3; Protein NDRG3; N-myc downstream-regulated gene 3 protein
Gene ID	57446.0
SwissProt ID	Q9UGV2.The antiserum was produced against synthesized peptide derived from human NDRG3. AA range:206-255

Application

Dilution Ratio	WB 1:500 - 1:2000. IHC 1:100 - 1:300. ELISA: 1:40000..
Molecular Weight	45kD

Background

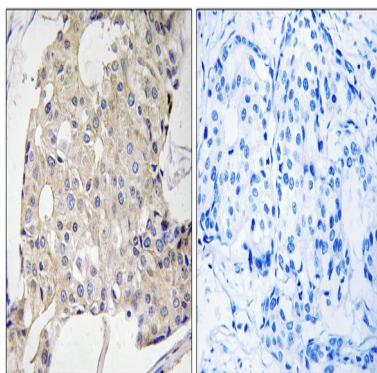
Product Name: NDRG3 Rabbit Polyclonal Antibody
Catalog #: APRab14479



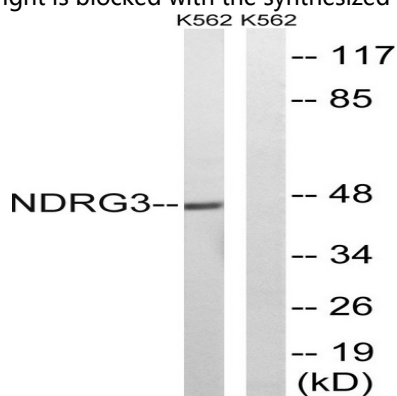
similarity:Belongs to the NDRG family.,tissue specificity:Ubiquitous. Highly expressed in brain.,similarity:Belongs to the NDRG family.,tissue specificity:Ubiquitous. Highly expressed in brain.,

Research Area

Image Data



Immunohistochemistry analysis of paraffin-embedded human breast carcinoma tissue, using NDRG3 Antibody. The picture on the right is blocked with the synthesized peptide.



Western blot analysis of lysates from K562 cells, using NDRG3 Antibody. The lane on the right is blocked with the synthesized peptide.

Note

For research use only.