
Summary

Production Name	MRGE Rabbit Polyclonal Antibody
Description	Rabbit Polyclonal Antibody
Host	Rabbit
Application	WB,ELISA
Reactivity	Human,Mouse,Rat

Performance

Conjugation	Unconjugated
Modification	Unmodified
Isotype	IgG
Clonality	Polyclonal
Form	Liquid
Storage	Store at 4°C short term. Aliquot and store at -20°C long term. Avoid freeze/thaw cycles.
Buffer	Liquid in PBS containing 50% glycerol, 0.5% BSA and 0.02% New type preservative N.
Purification	Affinity purification

Immunogen

Gene Name	MRGPRE
Alternative Names	MRGPRE; GPR167; MRGE; Mas-related G-protein coupled receptor member E; G-protein coupled receptor 167
Gene ID	116534.0
SwissProt ID	Q86SM8.The antiserum was produced against synthesized peptide derived from human MRGRE. AA range:171-220

Application

Dilution Ratio	WB 1:500-2000 ELISA 2000-20000
Molecular Weight	30kD

Product Name: MRGE Rabbit Polyclonal Antibody
Catalog #: APRab14086

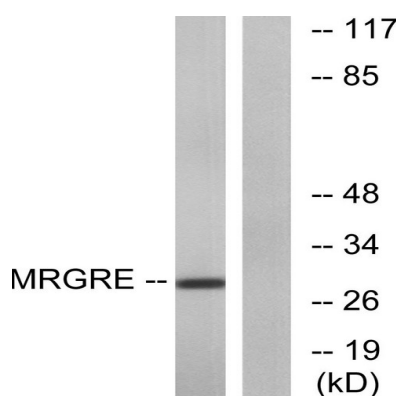


Background

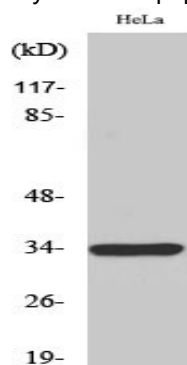
function:Orphan receptor. May regulate nociceptor function and/or development, including the sensation or modulation of pain.,similarity:Belongs to the G-protein coupled receptor 1 family. Mas subfamily.,function:Orphan receptor. May regulate nociceptor function and/or development, including the sensation or modulation of pain.,similarity:Belongs to the G-protein coupled receptor 1 family. Mas subfamily.,

Research Area

Image Data



Western blot analysis of lysates from HeLa cells, using MRGE Antibody. The lane on the right is blocked with the synthesized peptide.



Western Blot analysis of various cells using MRGE Polyclonal Antibody

Note

For research use only.