
Summary

Production Name	MMP-10 Rabbit Polyclonal Antibody
Description	Rabbit Polyclonal Antibody
Host	Rabbit
Application	IHC,IF,ELISA
Reactivity	Human,Mouse,Rat

Performance

Conjugation	Unconjugated
Modification	Unmodified
Isotype	IgG
Clonality	Polyclonal
Form	Liquid
Storage	Store at 4°C short term. Aliquot and store at -20°C long term. Avoid freeze/thaw cycles.
Buffer	Liquid in PBS containing 50% glycerol, 0.5% BSA and 0.02% New type preservative N.
Purification	Affinity purification

Immunogen

Gene Name	MMP10
Alternative Names	MMP10; STMY2; Stromelysin-2; SL-2; Matrix metalloproteinase-10; MMP-10; Transin-2
Gene ID	4319.0
SwissProt ID	P09238.The antiserum was produced against synthesized peptide derived from human MMP-10. AA range:361-410

Application

Dilution Ratio	IHC 1:100 - 1:300. IF 1:200 - 1:1000. ELISA: 1:40000. Not yet tested in other applications.
Molecular Weight	54kD

Background

Product Name: MMP-10 Rabbit Polyclonal Antibody
Catalog #: APRab13974

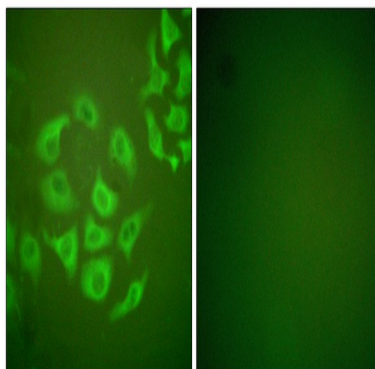


This gene encodes a member of the peptidase M10 family of matrix metalloproteinases (MMPs). Proteins in this family are involved in the breakdown of extracellular matrix in normal physiological processes, such as embryonic development, reproduction, and tissue remodeling, as well as in disease processes, such as arthritis and metastasis. The encoded preproprotein is proteolytically processed to generate the mature protease. This secreted protease breaks down fibronectin, laminin, elastin, proteoglycan core protein, gelatins, and several types of collagen. The gene is part of a cluster of MMP genes on chromosome 11. [provided by RefSeq, Jan 2016],catalytic activity:Similar to stromelysin 1, but action on collagen types III, IV and V is weak.,cofactor:Binds 2 zinc ions per subunit.,cofactor:Calcium.,domain:The conserved cysteine present in the cysteine-switch motif binds the catalytic zinc ion, thus inhibiting the enzyme. The dissociation of the cysteine from the zinc ion upon the activation-peptide release activates the enzyme.,function:Can degrade fibronectin, gelatins of type I, III, IV, and V; weakly collagens III, IV, and V. Activates procollagenase.,similarity:Belongs to the peptidase M10A family.,similarity:Contains 4 hemopexin-like domains.,

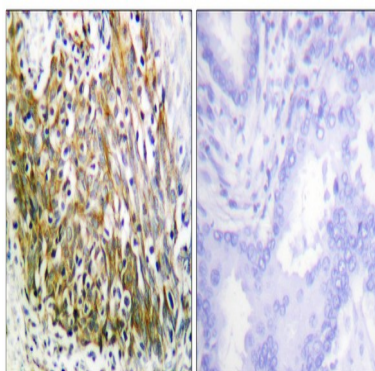
Research Area

Angiogenesis

Image Data



Immunofluorescence analysis of HepG2 cells, using MMP-10 Antibody. The picture on the right is blocked with the synthesized peptide.



Immunohistochemistry analysis of paraffin-embedded human lung carcinoma tissue, using MMP-10 Antibody. The picture

Product Name: MMP-10 Rabbit Polyclonal Antibody
Catalog #: APRab13974



on the right is blocked with the synthesized peptide.

Note

For research use only.