

## Summary

<b>Production Name</b>	Mi2-β Rabbit Polyclonal Antibody
<b>Description</b>	Rabbit Polyclonal Antibody
<b>Host</b>	Rabbit
<b>Application</b>	IHC,IF,ELISA
<b>Reactivity</b>	Human,Mouse

## Performance

<b>Conjugation</b>	Unconjugated
<b>Modification</b>	Unmodified
<b>Isotype</b>	IgG
<b>Clonality</b>	Polyclonal
<b>Form</b>	Liquid
<b>Storage</b>	Store at 4°C short term. Aliquot and store at -20°C long term. Avoid freeze/thaw cycles.
<b>Buffer</b>	Liquid in PBS containing 50% glycerol, 0.5% BSA and 0.02% New type preservative N.
<b>Purification</b>	Affinity purification

## Immunogen

<b>Gene Name</b>	CHD4
<b>Alternative Names</b>	CHD4; Chromodomain-helicase-DNA-binding protein 4; CHD-4; ATP-dependent helicase CHD4; Mi-2 autoantigen 218 kDa protein; Mi2-beta
<b>Gene ID</b>	1108.0
<b>SwissProt ID</b>	Q14839.The antiserum was produced against synthesized peptide derived from human CHD4. AA range:571-620

## Application

<b>Dilution Ratio</b>	IHC 1:100 - 1:300. IF 1:200 - 1:1000. ELISA: 1:20000. Not yet tested in other applications.
<b>Molecular Weight</b>	

**Product Name: Mi2- $\beta$  Rabbit Polyclonal Antibody**  
**Catalog #: APRab13880**

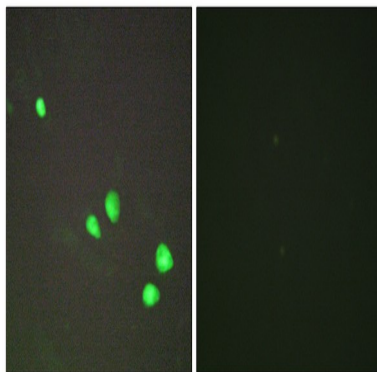


## Background

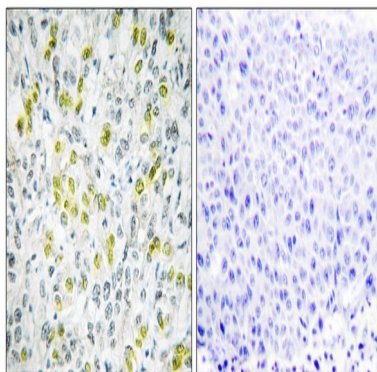
The product of this gene belongs to the SNF2/RAD54 helicase family. It represents the main component of the nucleosome remodeling and deacetylase complex and plays an important role in epigenetic transcriptional repression. Patients with dermatomyositis develop antibodies against this protein. Somatic mutations in this gene are associated with serous endometrial tumors. Alternative splicing results in multiple transcript variants encoding different isoforms. [provided by RefSeq, Jul 2014],disease:One of the main antigens reacting with anti-MI-2 positive sera of dermatomyositis.,function:Probable transcription regulator.,PTM:Phosphorylated upon DNA damage, probably by ATM or ATR.,similarity:Belongs to the SNF2/RAD54 helicase family.,similarity:Contains 1 helicase ATP-binding domain.,similarity:Contains 1 helicase C-terminal domain.,similarity:Contains 2 chromo domains.,similarity:Contains 2 PHD-type zinc fingers.,subunit:Central component of the nucleosome remodeling and histone deacetylase (NuRD) repressor complex. Interacts with TRIM27. Part of a complex containing ATR and HDAC2. Interacts with KLF1; the interaction depends on sumoylation of KLF1, and leads to its transcriptional repression.,

## Research Area

## Image Data



Immunofluorescence analysis of HepG2 cells, using CHD4 Antibody. The picture on the right is blocked with the synthesized peptide.



**Product Name: Mi2- $\beta$  Rabbit Polyclonal Antibody**  
**Catalog #: APRab13880**



---

Immunohistochemistry analysis of paraffin-embedded human liver carcinoma tissue, using CHD4 Antibody. The picture on the right is blocked with the synthesized peptide.

**Note**

For research use only.