
Summary

Production Name	KOX11 Rabbit Polyclonal Antibody
Description	Rabbit Polyclonal Antibody
Host	Rabbit
Application	WB,ELISA
Reactivity	Human,Mouse,Rat

Performance

Conjugation	Unconjugated
Modification	Unmodified
Isotype	IgG
Clonality	Polyclonal
Form	Liquid
Storage	Store at 4°C short term. Aliquot and store at -20°C long term. Avoid freeze/thaw cycles.
Buffer	Liquid in PBS containing 50% glycerol, 0.5% BSA and 0.02% New type preservative N.
Purification	Affinity purification

Immunogen

Gene Name	ZNF18 ZNF18; HDSG1; KOX11; ZKSCAN6; ZNF535; Zinc finger protein 18; Heart development-specific gene 1 protein; Zinc finger protein 535; Zinc finger protein KOX11; Zinc finger protein with KRAB and SCAN domains 6
Alternative Names	
Gene ID	7566.0
SwissProt ID	P17022.The antiserum was produced against synthesized peptide derived from human ZNF18. AA range:261-310

Application

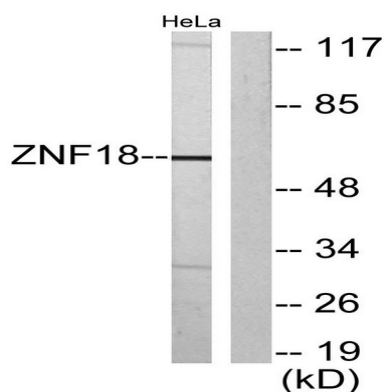
Dilution Ratio	WB 1:500-2000 ELISA 2000-20000
Molecular Weight	62kD

Background

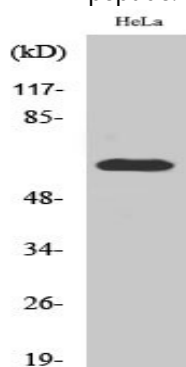
function:May be involved in transcriptional regulation.,similarity:Belongs to the krueppel C2H2-type zinc-finger protein family.,similarity:Contains 1 KRAB domain.,similarity:Contains 1 SCAN box domain.,similarity:Contains 5 C2H2-type zinc fingers.,function:May be involved in transcriptional regulation.,similarity:Belongs to the krueppel C2H2-type zinc-finger protein family.,similarity:Contains 1 KRAB domain.,similarity:Contains 1 SCAN box domain.,similarity:Contains 5 C2H2-type zinc fingers.,

Research Area

Image Data



Western blot analysis of lysates from HeLa cells, using ZNF18 Antibody. The lane on the right is blocked with the synthesized peptide.



Western Blot analysis of various cells using KOX11 Polyclonal Antibody

Note

For research use only.